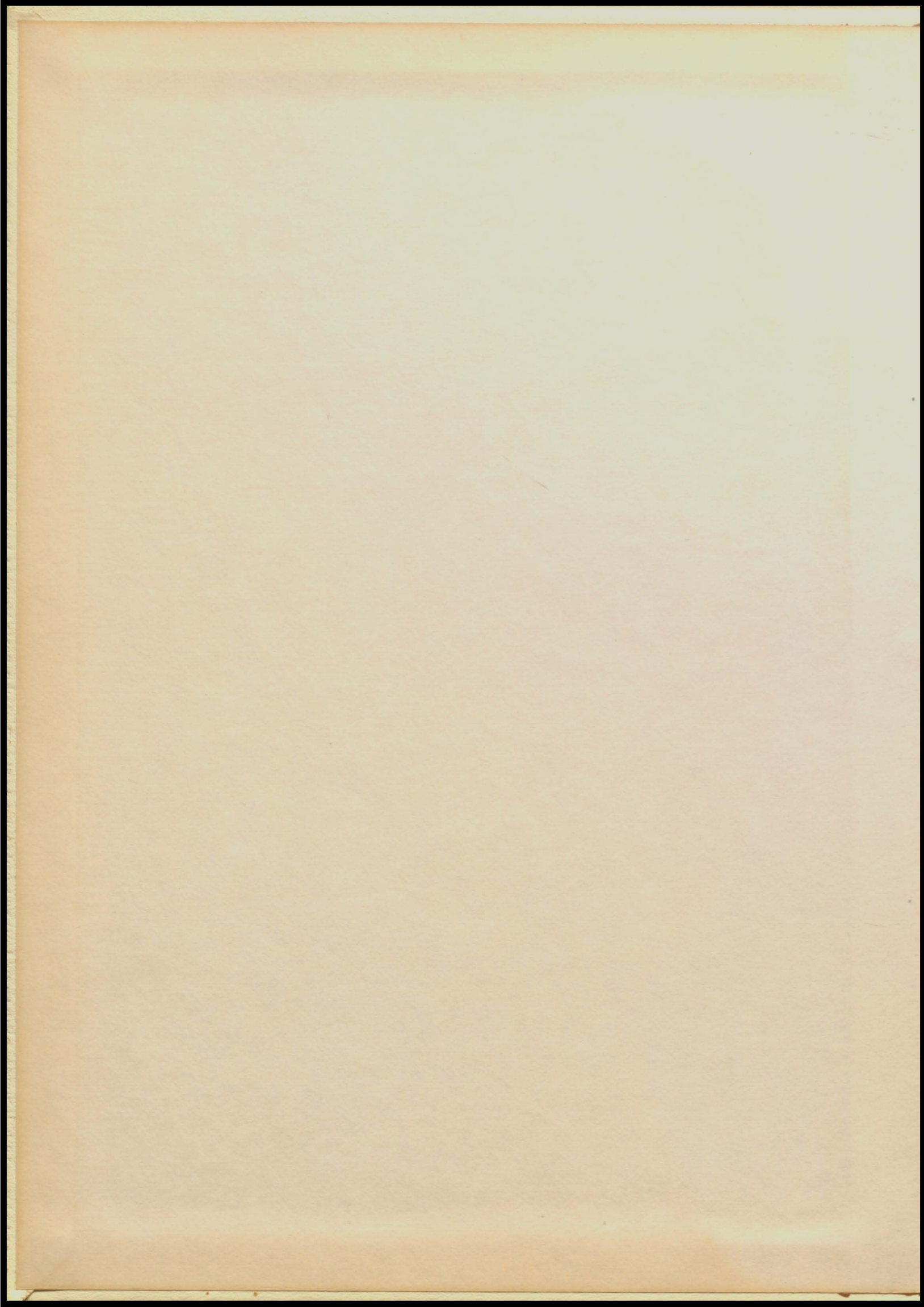


**SPHINX**

**64**



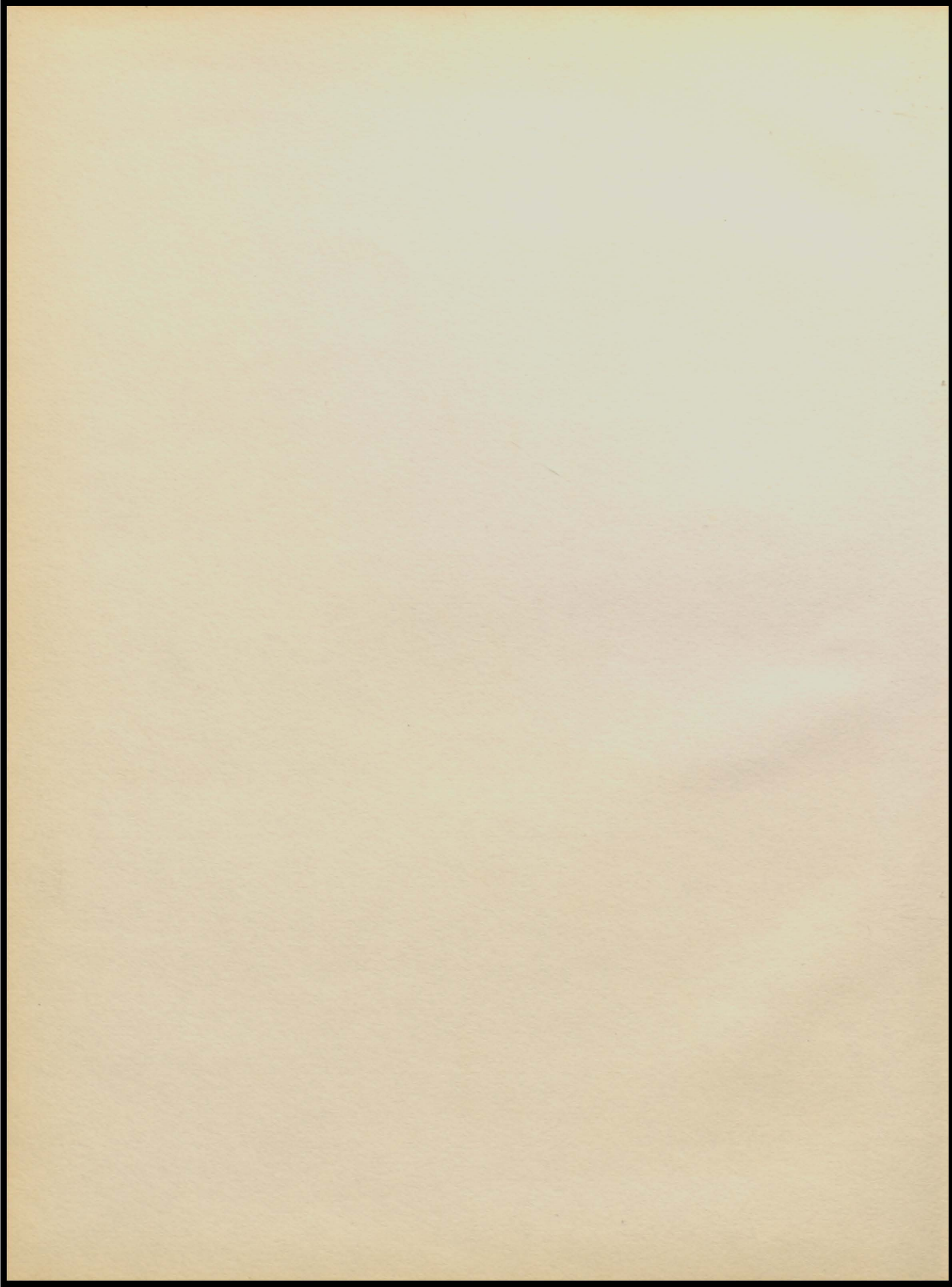
P. 100

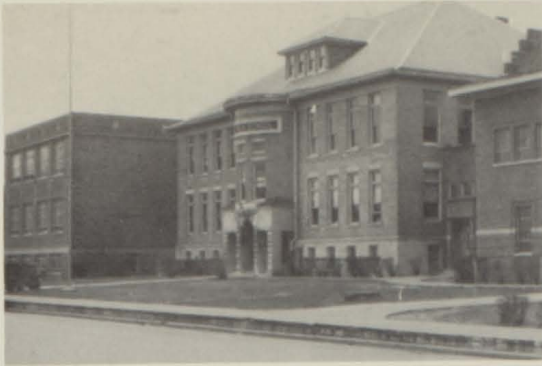
O

R

T

A





*P*

*SPHINX*  
*1964*



*O*

*VOLUME*  
*XXIII*



*R*

*PUBLISHED BY*  
*THE SENIOR CLASS*  
*HARRIS*  
*HIGH SCHOOL*  
*PORTA COMMUNITY*  
*UNIT DISTRICT*  
*#202*



*T*



*A*

*AS TIME PASSES*  
*CHANGES ARE MADE*

# FOREWORD

"Know the value of time; snatch, seize, and enjoy every moment of it. No idleness, no laziness, no procrastination. Never put off till tomorrow what you can do today."

--Earl of Chesterfield

## CONTENTS



*ADMINISTRATION*



*SENIORS*



*UNDERCLASSMEN*



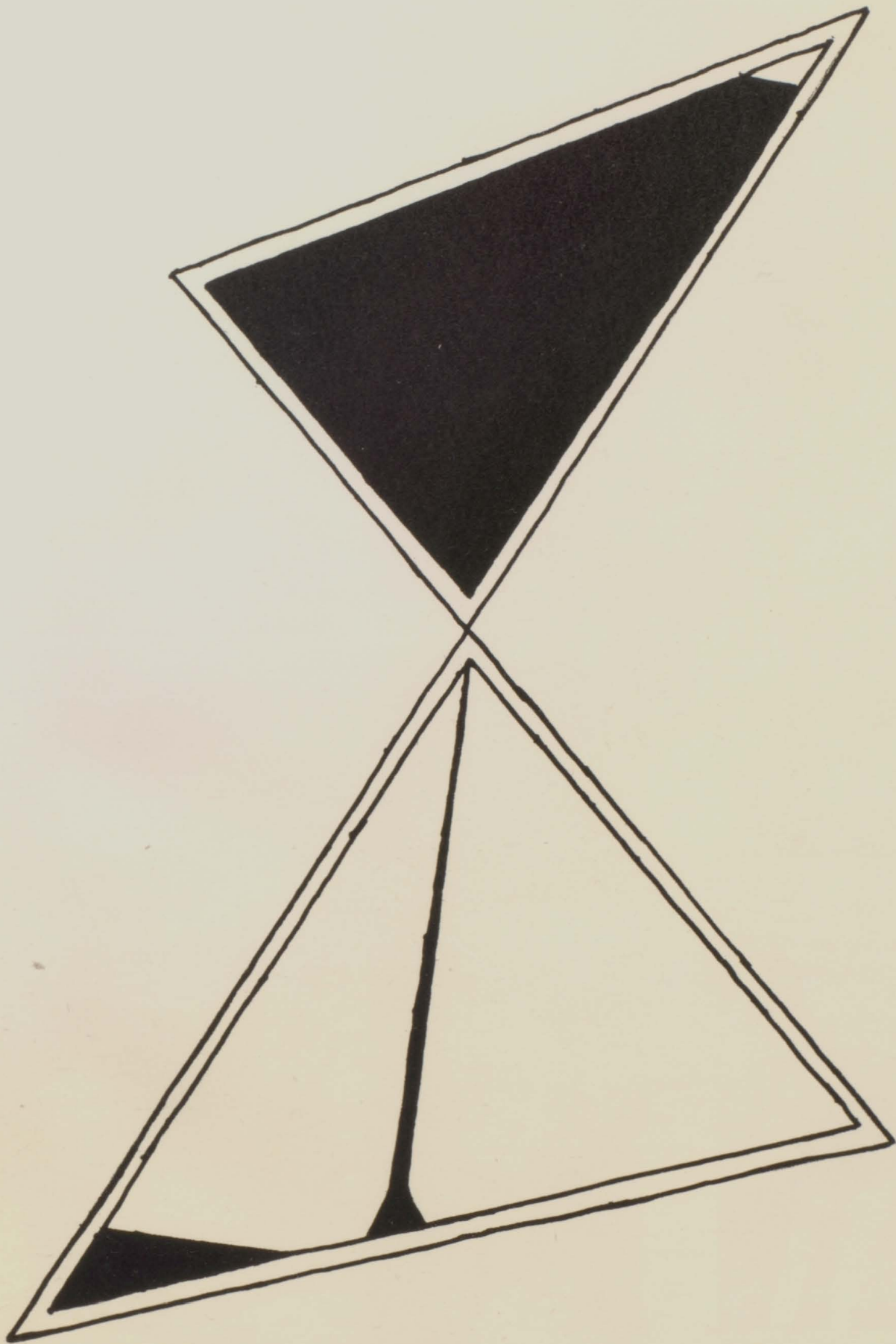
*ACTIVITIES*



*ORGANIZATIONS*



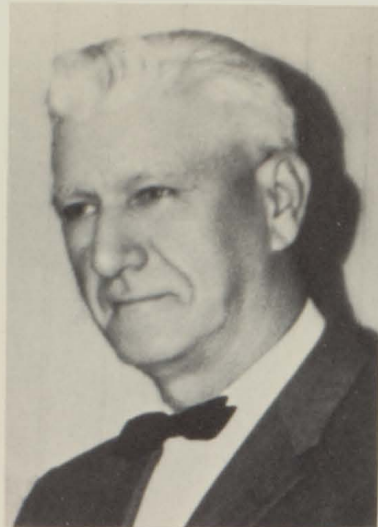
*SPORTS*



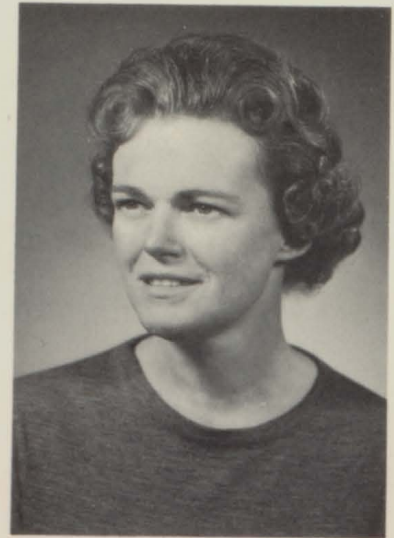
*ADMINISTRATION*



Edward Golden



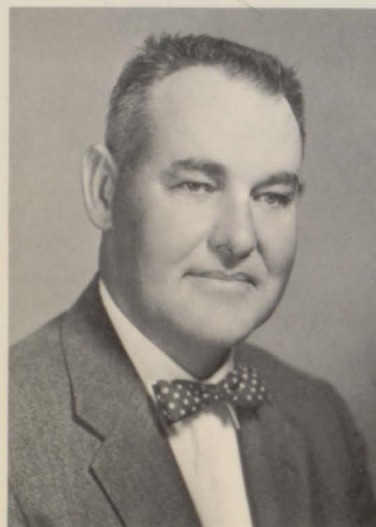
Harry Hinrichs



Mrs. John Schirding  
President



John Hollis, Secretary



Clinton Thomas



Dean Toohy



Melvin Schoneweis

*BOARD  
OF  
EDUCATION*





Superintendent Donald Long

Principal Mina Terry

MARIAN ABBOTT  
English III; Illinois College, B.A.

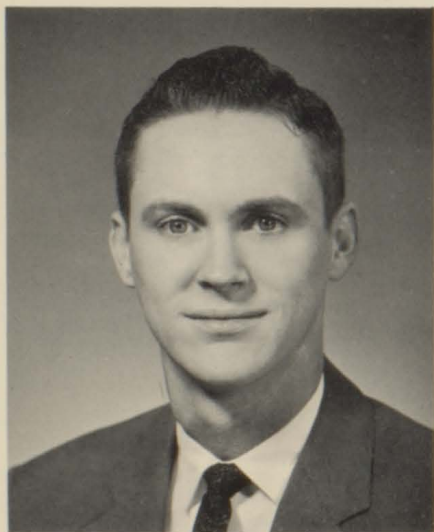


RALEIGH BAGBY  
Biology; Joliet Junior College;  
John Marshall; Illinois State  
Normal University, B.E.; Eastern  
Illinois; University of Illinois;  
Western Illinois.

ROGER BASSANA  
Band; Eastern Illinois University,  
B.S., M.S.



"To the true teacher, time's hour-glass should  
still hold gold dust." --Douglas Jerrold



RANDAL BRAUN  
Chemistry, Physics, General Sci-  
ence; University of Illinois, B.A.,  
B.E.



RICHARD CLARK  
Coach, Physical Education, Health  
Education; Western Illinois Uni-  
versity, B.S.



MARY DUDNEY  
French; Abilene Christian College,  
B.A.; Peabody College; Vanderbilt  
University.

JERRY FREY

Driver Education, Physical Education, Health; Western Illinois University, B.S. (physical education).



BEN HADDICK

Industrial Arts; Bradley University, B.S.; Western Illinois University; Augustana College.

ANN HODGSON

Business Education; Western Illinois University, B.E.



MARGUERITE HOLLOWAY

Home Economics; Carthage College; Eastern Illinois State College, B.E.; University of Illinois.

WILMA JANSSEN  
English I; Illinois State Normal University, B.E.



RUDY KNAPPMAYER

American History, World History, Cultural Geography, American Problems, Civics; Springfield Jr. College; Quincy College, B.A.

DOROTHY KNOUS  
Vocal Music; Illinois State Normal  
University, B.S. in Education.



ROLAND LONG  
Math; Western Illinois State Uni-  
versity; Arizona State University,  
B.E., M.S. in Ed.

DONALD LONG  
Superintendent of Porta District  
202; Bradley University, B.S.;  
Western Illinois University, M.S.  
in Ed.



RUTH PETERSON  
Librarian; University of Illinois;  
James Millikin University; Uni-  
versity of Chicago, Ph.B.; Uni-  
versity of Southern California.



EVERETT SANDUSKY  
General Math, Dean of Students,  
General Science; University of  
Illinois, B.S.; Illinois State Normal,  
M.S.



LESTER OTT  
American and World History;  
A.B.--Knox College; A.M.--Har-  
vard University; Ed. D., Suffolk  
University; Harvard University;  
Boston University; Denver Uni-  
versity; University of Chicago;  
University of Helsinki; University  
of Vienna; Illinois State Uni-  
versity; University of Illinois.



CHARLOTTE SATORIUS  
Business Education; Augustana Col-  
lege, B.A.; Columbia University,  
M.A.; Gregg College; Northwestern  
University.



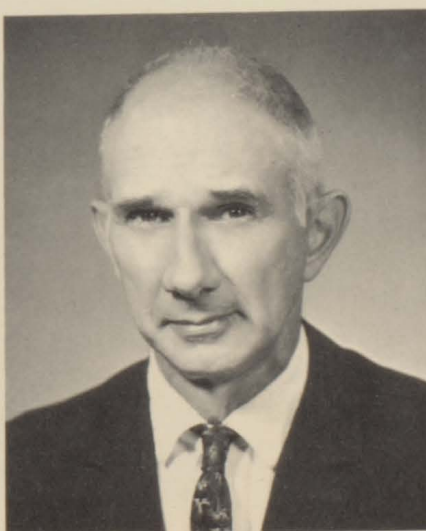
PATRICIA SHOWALTER  
Girls' Physical Education; Illinois  
State University; University of  
Colorado; Western Illinois Uni-  
versity, B.S. in Ed.

MINA TERRY  
English; Illinois State Normal Uni-  
versity; Colorado Teachers' Col-  
lege; Illinois College, B.A.; Uni-  
versity of Illinois, M.A.; Columbia  
University.



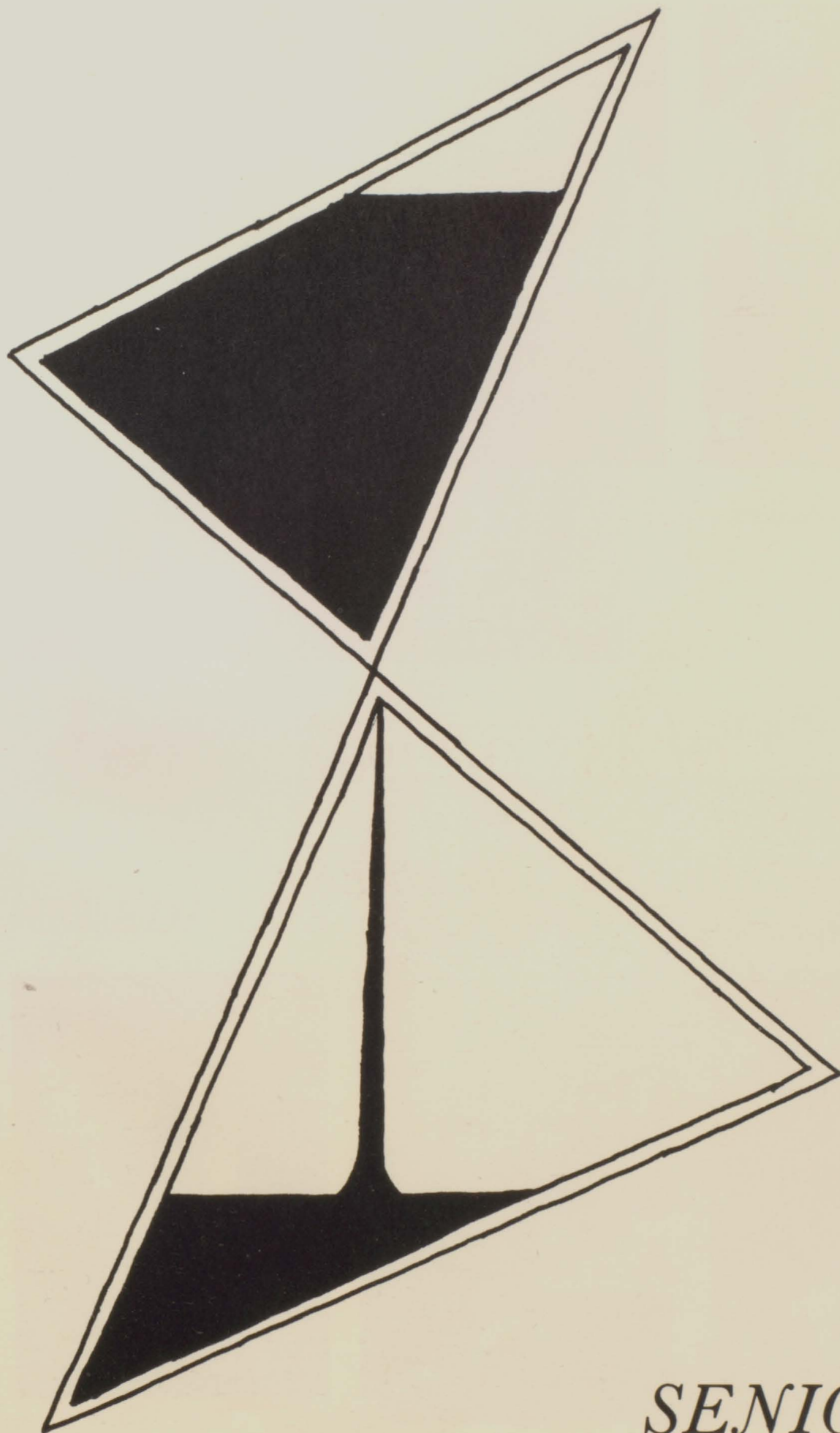
RUTHELMA WANKEL  
English; Illinois State Normal Uni-  
versity, B.E.

MAX WORTHINGTON  
Agriculture; University of Illinois,  
B.S.



PHILIP YOUNG  
Guidance Counselor; Eastern  
Illinois University, B.S.; University  
of Illinois, M.S.; Advanced Cer-  
tificate in Education--Indiana  
State Teachers' College.





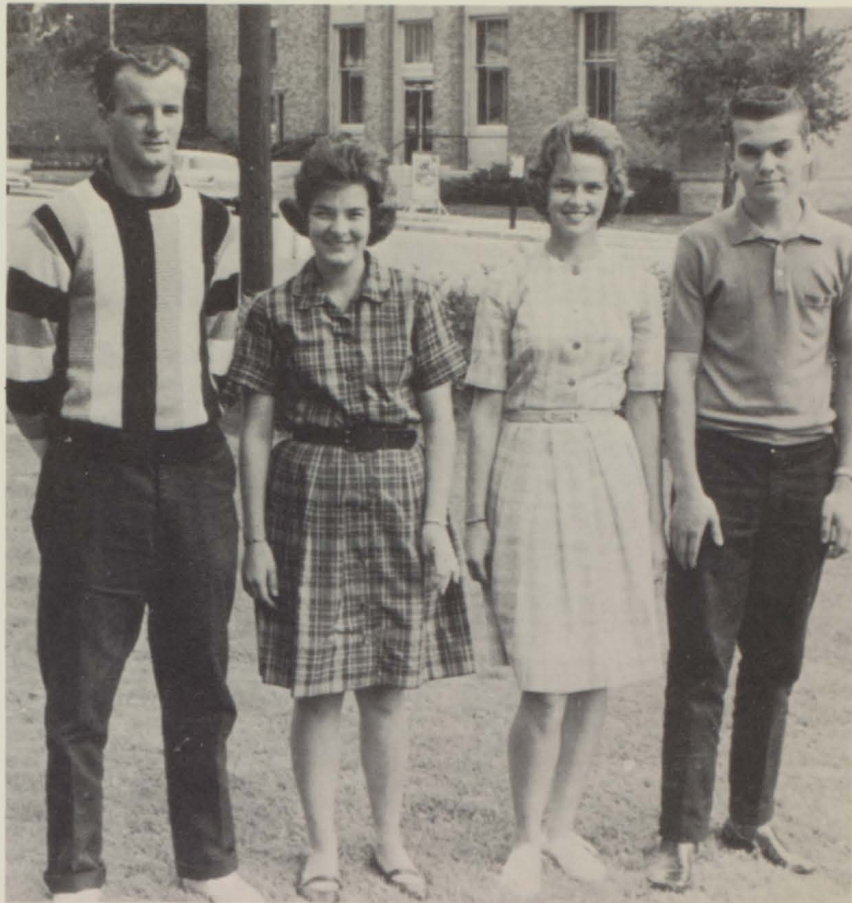
*SENIORS*



*HISTORY*  
*CLASS OF 1964*  
*HOW TIME FLIES!*







## CLASS OFFICERS

President . . . . . Larry Eddings  
 Treasurer . . . . . Roberta Goans  
 Secretary . . . . . Judy Gronewold  
 Vice-Pres. . . . . Gene Horn

Class Colors--Ice Blue and  
 Silver

Class Flower--White Rose

*Class Motto—"Time Waits for No Man."*

## CO-EDITORS

Brenda Peters  
 Donna Cherry  
 Barbara Janssen





LINDA ALBERT

Chorus 1,2; Civil Service 4; Homecoming Court 4; Nat. Honor Soc. 3,4; Pep Club 1,2,3; Sphinx Staff 4; G.A.A. 3; Contest Chorus 1,2.

JANICE ARNOLD  
Chorus 1,2,3; Civil Service 4;  
Contest Chorus 1,2,3; Library Staff  
3; Pep Club 1,2,3; Sphinx Staff  
3,4.



JUDY ATTERBERRY

Chorus 2; F.H.A. 2; Pep Club 3;  
Sphinx Staff 4.



ED BACKS

F.F.A. 1,2,3,4; Grain Judging 1,3;  
Junior Play 3; Livestock Judging  
3; Pep Club 1,2,3; Poultry Judging  
1; Projectionist 1,2; Speech Club  
3; Sphinx Staff 3,4.

JUDY BALSTER  
Cheerleader 1,2,3; Chorus 1,2,3;  
Civil Service 4; Class Officer  
(Sec.) 1; Contest Chorus 1,2;  
I.S.S. 3; Pep Club 1,2,3; Sphinx  
Staff 4.



BONNIE BARBEE

Band 1,2,3,4; Band Ensemble  
1,2,4; Chorus 4; Chorus Ensemble  
Christmas Play 2; Civil Service 4;  
Contest Band 1,2,3,4; Contest  
Chorus 4; F.H.A. 1,2,3,4 (Treas.  
4); F.T.A. 2,3,4; Intramurals 1,2;  
Pep Club 1,2,3; I.S.S. 1,2,3,4  
(Pres. 2); Speech Club 1,2,3; Li-  
brary Staff 1,2; Sphinx Staff 2,4;  
Marching Band 1,2,3,4; National  
Honor Soc. 3,4.



DAVID BARBEE

Class Officer 1,4; Football 1,2; Intramurals 1; Pep Club 1,2,3; Office Receptionist 1; Speech Club 1; Senior Play 4; Sphinx Staff 4; Student Council 4.

WILLIAM BARNETT  
Pep Club 3; Sphinx Staff 4.



CONNIE BEHRENDS

Band 1,2,3,4; Band Ensemble 1,2,3,4; Chorus 3,4; Chorus Ensemble 3,4; Contest Band 1,2,3,4; Contest Chorus 3,4; Dance Band 1,2,3; F.H.A. 1,2,3,4 (3 V.P. , 4 V.P.); Homecoming Court 3,4; I.S.S. 3,4 Reporter 4; Library Staff 2,3,4; Marching Band 1,2,3,4; Pep Club 1,2,3; Sphinx Staff 2,3,4.



ROD BOEKER

Baseball 2,3,4; Basketball 2,3,4; Class Vice-Pres. 2; Class Treas. 3; Football 1,2,3; Key Club 2,3,4; Letterman's Club 1,2,3,4 Sec. 3; Pep Club 1,2,3; Key Club Treas. 3; Speech Club 4; Sphinx Staff 4; Student Council 4; Council Pres. 4; Track 1,2,3,4.

PAULA BOSKE  
Band 1,2; Contest Band 1,2; F.H.A. 1,2,3,4; Intramurals 1,2; Library Staff 2,3,4; Marching Band 1,2; Pep Club 1,2,3; Sphinx Staff 4; G.A.A. 3,4.



DON BRAUER

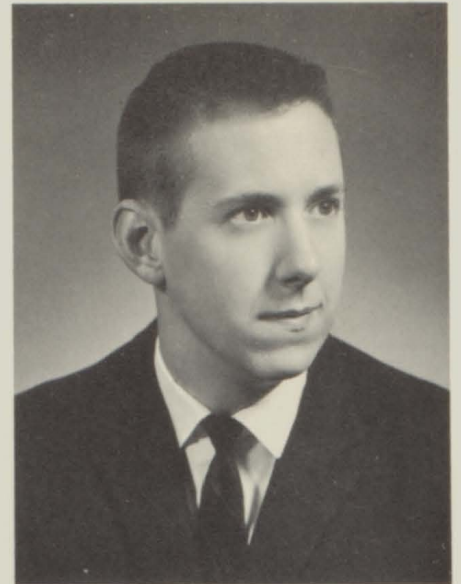
Football 1,2,3,4 Capt. 4; Baseball 1,2,4; Basketball 1,2,3,4; Class President 3; F.F.A. 1,2,3,4; F.F.A. Vice-Pres. 4; F.F.A. Treas. 3; Junior Play 3; Key Club 2,3,4; Key Club Pres. 4; Letterman's Club 1,2,3,4; Livestock Judging 2,3,4; National Honor Society 3,4; Sphinx Staff 4; Student Council 4 Vice Pres.; Track 1,2,4; Varsity Club 1,2,3,4.



JIM BROWN

Band 1,2; Baseball 1,2; Contest Band 1,2; F.F.A. 1,2,3,4; F.F.A. Sec. 4; Football 1,2,3,4; Grain Judging 2,3; Homecoming Court 4; Letterman's Club 4; Livestock Judging 1,2; Pep Club 1,2,3; Poultry Judging 3; Projectionist 1,2; Sphinx Staff 4; Track 2; Varsity Club 2,4.

LARRY BYERS  
Sphinx Staff 4.



DAVID CHENEY

Band 1; Baseball 4; F.T.A. 4; Junior Play 3; National Honor Society 3,4; Pep Club 1,2,3; Speech Club 3,4; Speech Contest Play 3; Sphinx Staff 4; Senior Play 4.



DONNA CHERRY

Band 1,2,3,4; Band Ensemble 1,2,3,4; Chorus 2,3,4; Chorus Ensemble 3,4; Christmas Play 2; Contest Band 1,2,3,4; Contest Chorus 3,4; Dance Band 2,3; I.S.S. 3,4; Junior Play 3; Library Staff 2,4; Marching Band 1,2,3,4; National Honor Society 3,4; Pep Club 1,2,3; Music Camp 1; Speech Club 1,2,3; Girls' State 3; Sphinx Staff 4; Yearbook Co-editor 4.

MIKE COBB

Transferred from Washington and Lee High School, Arlington, Virginia.



NANCY CONN

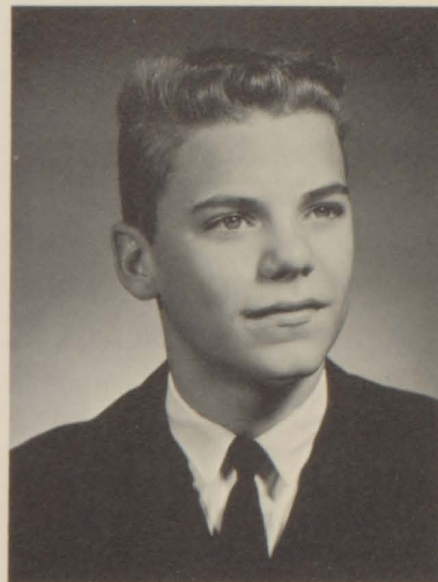
Chorus 2; Civil Service 4; Contest Chorus 2; F.H.A. 3; I.S.S. 1; Library Staff 2; Pep Club 3; Sphinx Staff 4.



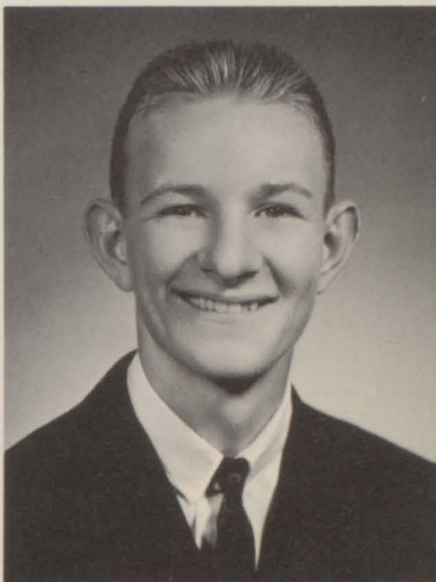
LINDA COX

Tallula 1,2,3; Cheerleader 3; Class President 3; Class Historian 1; Contest Chorus 1,2; F.H.A. 1,2,3,4, Chairman of projects, Vice-Preisdnet 4; F.T.A. 2,3; Library Staff 1,2,4; Sec.-Treas. 4; Sphinx Staff 4; Class Play 3; G.A.A. 1,2,3,4; G.A.A. Pres. 4.

JOHN CRAWFORD  
Band 1,2; F.F.A. 1,2,3,4; Marching Band 1,2; Poultry Judging 1,2; Sphinx Staff 4.



JOHN CUMMINGS  
Sphinx Staff 4.



LARRY EDDINGS  
Baseball 2; Basketball 1,2,3; Class Officer 4 (Pres.); Football 1,2,3; Pep Club 1,2,3; Projectionist 1,2,3,4; Student Council 3,4; Track 1,2; Varsity Club 1,2,3; Sphinx Staff 4.



LENORE DUNN

Tallula 1,2,3; Chorus 1; Junior Play 3; Tallula Class Play 3; G.A.A. 1; Sphinx 4.

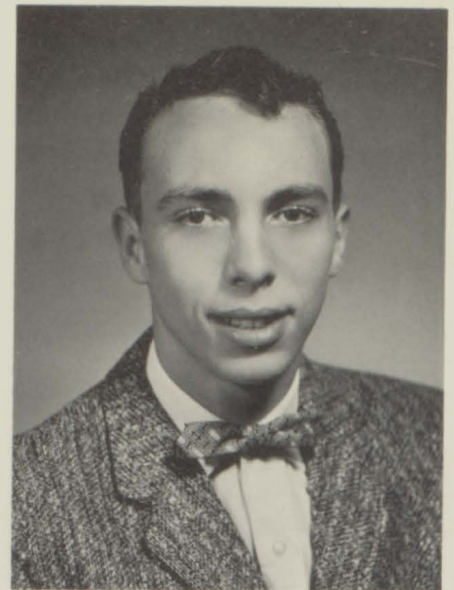


CONNIE EDWARDS  
Civil Service 4; F.H.A. 1,2,3; Library Staff 1,2,3,4; Pep Club 1,2,3; Sphinx Staff 4.





STEPHEN A. FINNEY  
 Band 1,2,3; Band Ensemble 1,2,3;  
 Baseball 2; Contest Band 1,2,3;  
 Dance Band 2,3; Football 2,3,4;  
 F.T.A. 3,4--Historian 3; Intra-  
 murals 2; Key Club 2,3,4; March-  
 ing Band 1,2; Pep Club 1,2,3;  
 Speech Club 1,2,4; Sphinx Staff  
 4--Artist; Student Council 3;  
 Track 2; Music Camp 2; Senior  
 Play 4.



VERNIE GARVIN  
 Pep Club 1,2,3; Basketball 2;  
 Christmas Play 1,2,3; Civil Service  
 4; Football 3; Junior Play 3; Speech  
 Club 1,2,3,4; Senior Play 4; Sphinx  
 Staff 4.



HUGH BILL FAITH  
 Christmas Play 2; F.F.A. 4; Foot-  
 ball 3; Pep Club 1,2,3; Projec-  
 tionist 2; Speech Club 4--Reporter;  
 Track 2; Sphinx Staff 4.



DON GILMORE  
 Pep Club 1,2,3; Senior Play 4;  
 Sphinx Staff 4.



ROBERTA GOANS  
 Transfer from Greenvew; Civil  
 Service 4; Class Officer 4--Treas.;  
 Library Staff 3,4; National Honor  
 Society 3,4; Pep Club 3; Speech  
 Club 4; Sphinx Staff 4; G.A.A. 3,4.



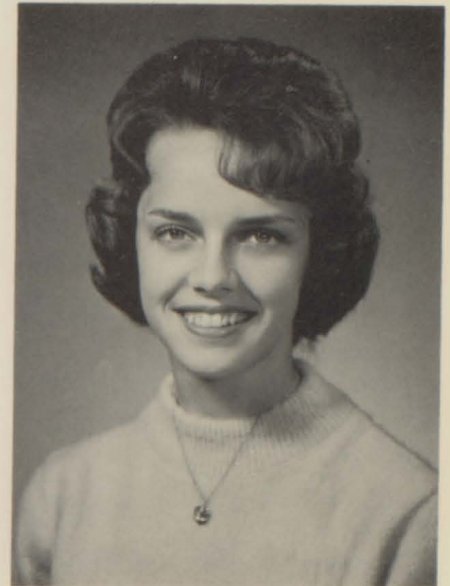
LINDA GORDON  
 Pep Club 1,2,3; Sphinx Staff 4.



FLOYD GROGAN

Tallula 1,2,3; Baseball 1,2,3,4; Basketball 1,2,3,4; Chorus 2; Class Officer 3; Football 4; F.T.A. 2,3; Junior Play 3; Letterman's Club 1,2,3; Student Council 2,3; Sphinx Staff 4; Senior Play 3.

GLORIA GRONEWALD  
Chorus 1; F.H.A. 1,2,3,4; Library Staff 1,2,3,4; Pep Club 1,2,3; Sphinx Staff 4; Usherette Jr. Play 3; Sr. Play 4.



JUDY GRONEWOLD

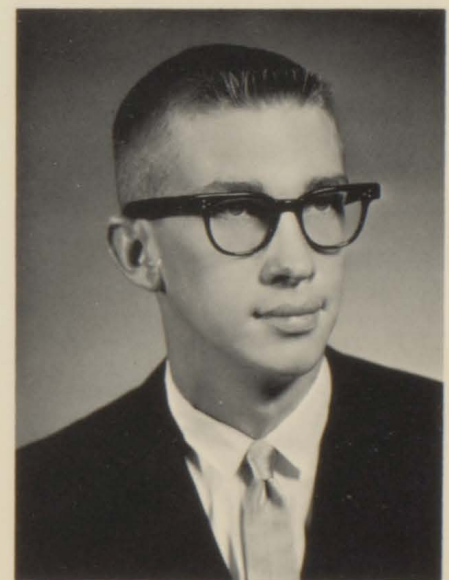
Cheerleader 2,3,4; Chorus 2; Civil Service 4; Class Officer Sec. 1,2,4, Treas. 3; F.H.A. 1,2,3, Historian 4, Pres.; F.T.A. 2 Treas., 3, V.Pres. 4; Homecoming Court 3,4, Queen 3; Intramurals 1,2,3; I.S.S. 1,2, Treas. 3,4, V.Pres.; Library Staff 1,2,4; National Honor Society 3,4; Pep Club 1,2,3; Speech Club 2,3 Sec., 4 V.Pres.; Sphinx Staff 4; G.A.A. 3,4.



ROSE GROSSBAIER

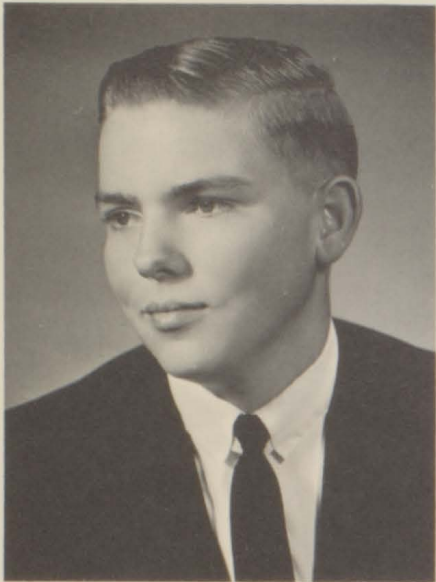
Civil Service 4; F.H.A. 1,2; Library Staff 1,2,3,4; Pep Club 1,2,3; Sphinx Staff 4.

RAYMOND GROVER  
Letterman's Club 1,2,3; Track 1; Sphinx Staff 4.



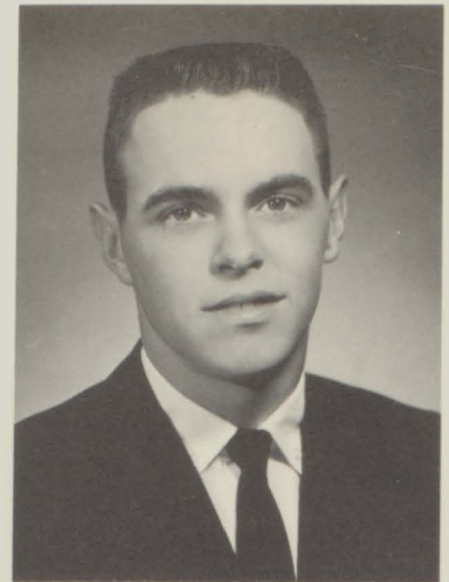
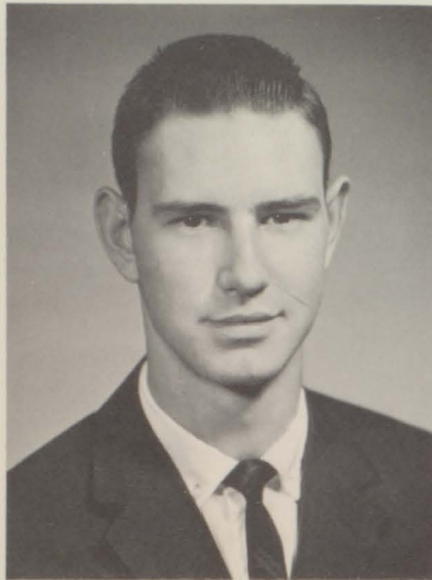
AL HEYEN

F.F.A. 1,2,3,4; Grain Judging 2,3; Land Judging 2,3; Livestock Judging 2,3; Pep Club 1,2,3; Poultry Judging 2,3; Projectionist 1,2; Sphinx Staff 4.

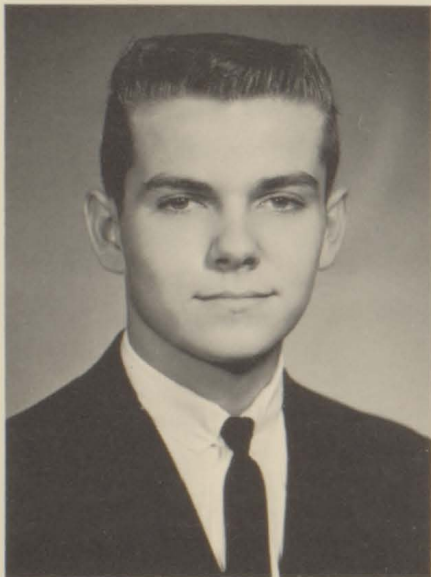


**JIM HIGGINBOTHAM**  
F.F.A. 4; Pep Club 1,2,3; Sphinx  
Staff 4.

**ROGER HILL**  
Basketball 2,3,4; Pep Club 1,2,3;  
Sphinx Staff 4; Track 4.

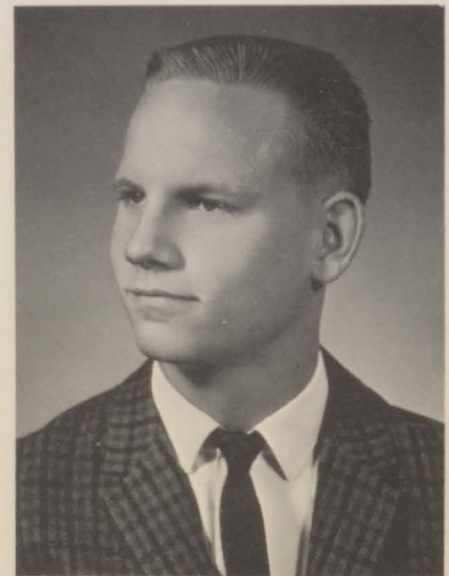


**STEVE HOLLIS**  
F.F.A. 1,2,3,4, Treas. 4; Grain  
Judging 3; Land Judging 2; Live-  
stock Judging 1; Pep Club 1,2,3;  
Poultry Judging 3; Speech Club 4;  
Sphinx Staff 4.



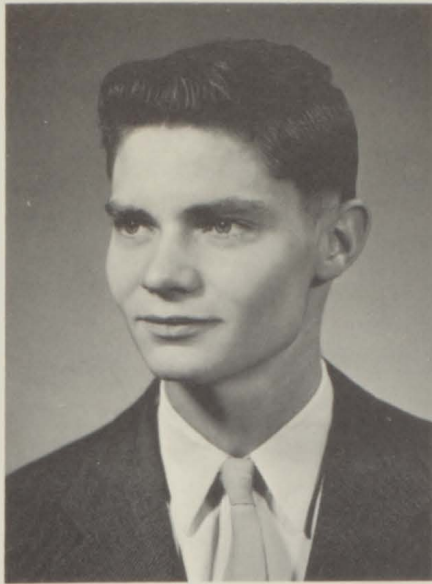
**GENE HORN**  
Class Officer 1,4, Vice Pres.; Key  
Club 2,3,4; Pep Club 1,2,3; Pro-  
jectionist 3,4.

**BARBARA JANSSEN**  
Band 3,4; Chorus 1,2,3,4, Pres. 4;  
Chorus Ensemble 1,2,3,4; Class  
Officer 1, Sec.; Contest Band 3,4;  
Contest Chorus 1,2,3,4; Dance  
Band 3,4; F.T.A. 1,2, V.Pres. 2;  
Library Staff 3,4; Marching Band  
3,4; National Honor Soc. 3,4, Sec.  
4; Pep Club 3; Speech Club 3;  
Speech Contest Play 3; Sphinx  
Staff 4, Co-Editor; Music Camp  
1,2; G.A.A. 1,2,3,4, Pres. 3,4.



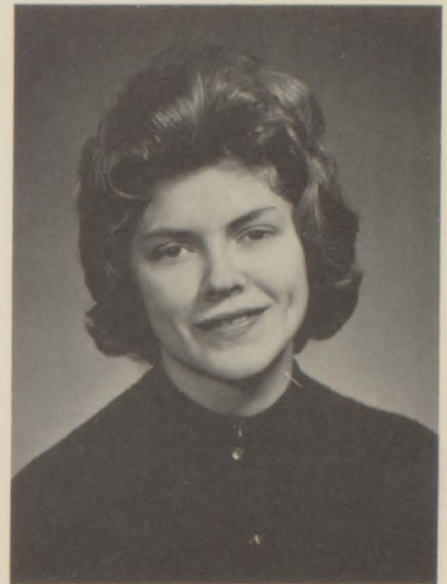
**RICK JUERGENS**  
Football 2,3; Intramurals 1,2; Pep  
Club 1,2,3; Speech Club 1,2.





**JACK KELLY**  
Football 1; Sphinx Staff 4.

**BOB KEMP**  
Tallula 1,2,3; Baseball 1,2,3; Basketball 1,2; Letterman's Club 1,2,3; Pep Club 1,2,3; Projectionist 1,2; Senior Play 3; Varsity Club 2.

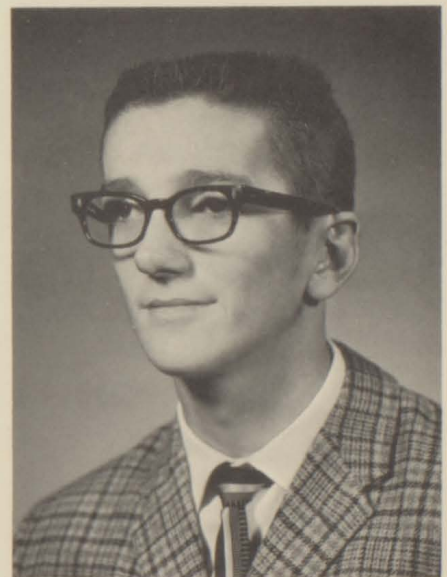


**ILENE KINNEY**  
Chorus 2; F.H.A. 1,2,3; Intramurals 1; Pep Club 1,2,3; Sphinx Staff 4; Usherette Jr. Play 3.

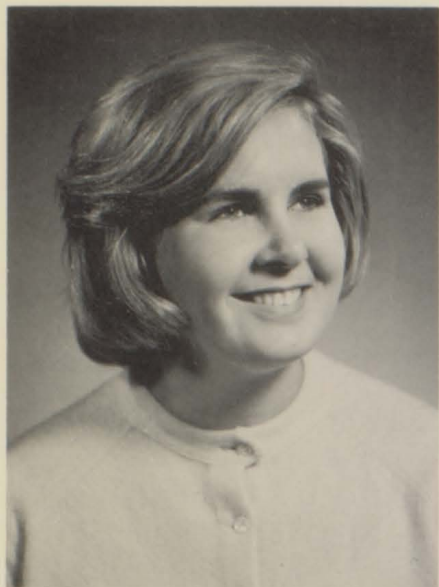


**ELLEN KLAUZER**  
Civil Service 4; F.H.A. 1,2,3,4; Junior Play 2,3,4; Library Staff 2,3,4; Pep Club 2,3; Sphinx Staff 4.

**MIKE KOKE**  
Sphinx Staff 4.



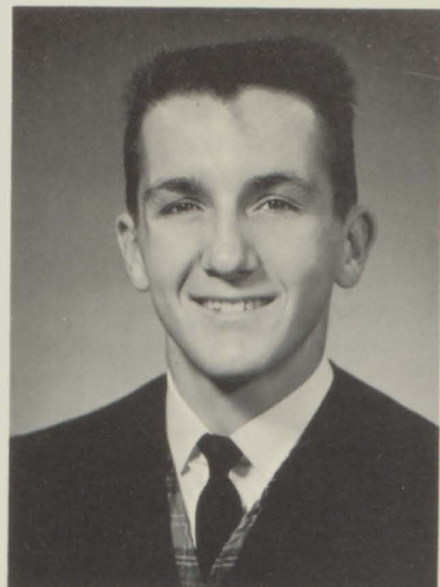
**JERRY LIBBEN**  
Baseball 4; Basketball 4; Junior Play manager 3; Pep Club 1,2,3; Projectionist 4; Speech Club 2; Sphinx Staff 4 (photographer).



**BARBARA LOTT**

Transfer from Springfield High School. I.S.S. 4; Speech Club 4; G.A.A. 4; Sphinx Staff 4.

**SUE LOUNSBERRY**  
Civil Service 4; Intramurals 1,2;  
I.S.S. 3,4, Pres. 3; Pep Club 1,2,3;  
Sphinx Staff 4.



**DENNY LYNN**

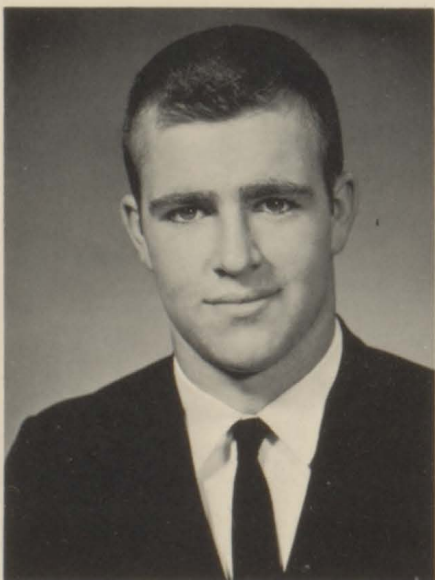
Letterman's Club 3,4; Pep Club 1,2,3; Track 1,3,4; Varsity Club 3,4; Sphinx Staff 4.



**PAM MacLEOD**

Tallula 1,2,3; Band 1,2,4; Cheerleader 3; Chorus 1,2,3; Chorus Contest 1,2,3; Class Vice-Pres. 3; F.H.A. 2,3,4, Treas. 4; F.T.A. 2,3,4; Homecoming Queen 4; Tallula Jr. Play 3; Marching Band 1,2,4; Sphinx Staff 4; Girls' Staff 3; G.A.A. 1,3,4, Treas. 4.

**JOHN McCOMBS**  
Transfer from Virginia; Basketball 2; Football 2,3,4; Letterman's Club 3,4; Pep Club 2,3; Sphinx Staff 4; Track 3; Varsity Club 3,4; Homecoming Escort 4.



**KAREN McCOOL**

Band 1,2,3,4; Chorus 2,3,4; Chorus Ensemble 4; Civil Service 4; Contest Band 2,3,4; F.H.A. 1,2,3,4; Junior Play 3; Library Staff 2; Marching Band 1,2,3,4; Pep Club 1,2,3; Speech Club 1,2,3,4; Sphinx Staff 4.



**JANNETTE McDOUGALL**  
Chorus 1; Civil Service 4; F.H.A. 1,2,3,4; Pep Club 1,2,3; Sphinx Staff 4; Usherette Jr. Play 3.

**CHRISTINE MARTIN**  
Chorus 1,4; Chorus Ensemble 4; Christmas Play 3; Civil Service 4; Contest Chorus 4; F.T.A. 4 (Parliamentarian) 2,3; Intramurals 1,2; I.S.S. 2,3; Library Staff 1,2,3,4; National Honor Society 3,4; Pep Club 1,2,3; Office Receptionist 1,2,3; Projectionist 1,2; Speech Club 2,3,4; Sphinx Staff 4; G.A.A. 3,4.



**BOB MORGAN**  
Band 1,2,3 (Board of Directors 4); Band Ensemble 2,3,4; Contest Band 1,2,3,4; Dance Band 2,3,4; F.T.A. Pres. 4; Junior Play 3; Marching Band 1,2,3; Pep Club 1,2,3; Speech Club 4; Senior Play 4; Sphinx Staff 4 (Photographer).



**JIM MOSS**  
Tallula 1,2,3; Basketball 1,2,3,4; Chorus 1,2,3; F.F.A. 4; F.T.A. 2,3; Junior Play 3; Letterman's Club 1,2,3; Projectionist 1,2,3; Senior Play 3; Student Council 3,4; Tallula (Jr.-Sr. Prom) King; Sphinx Staff 4.

**KATIE MOULTON**  
Band 1,2,3,4, Sec. 3; Band Ensemble 1,2,3,4; Christmas Play 2; Civil Service 4; Contest Band 1,2,3,4; Dance Band 2,3,4; I.S.S. 3; Library Staff 1,2,3,4; Marching Band 1,2,3,4; Pep Club 1,2,3; Projectionist 4; Speech Club 2,3,4; Sphinx Staff 4 (Typist); Music Camp 3; G.A.A. 3,4.



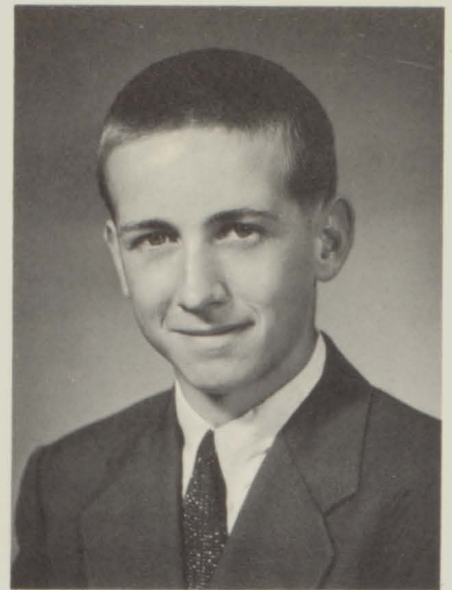
**SALLY NANCE**  
Chorus 1,2,3,4; Contest Chorus 1,2,3,4; F.H.A. 1; Pep Club 1,2,3; Sphinx Staff 4.



MARY LEE NIELSON

Chorus 1,2,3; Contest Chorus 1,2;  
F.H.A. 1,2,3,4; Pep Club 1,2,3;  
Sphinx Staff 4; Usherette (Jr. Play)  
3; Civil Service 4.

BARBARA NIEMEIER  
Tallula 1,2,3; Chorus 1,2,3;  
Christmas Play 1,2,3; Class Officer  
1,2,3 (Sec. 3; Rep. 1,2); Contest  
Chorus 1,2,3; F.H.A. 1,2,3,4, Sec.  
4; F.T.A. 1,2,3,4, Rep. 3; G.A.A.  
1,2,3,4 (Sec. 4, Treas. 3); Tallula  
Jr. Play 3; Prom Queen 3.



DAVID OTTO  
Sphinx Staff 4.



GALE PATRICK  
Sphinx Staff 4.

BRENDA PETERS  
Band 1,2,3,4; Band Ensemble 1;  
Chorus 1,2,3,4; Chorus Ensemble  
4; Contest Band 1,2,3,4; F.T.A. 2;  
Library Staff 2,3,4; Marching Band  
1,2,3,4; National Honor Society  
3,4, Treas. 4; Pep Club 1,2,3;  
Speech Club 1,2; Speech Contest  
Play 1; Sphinx Staff 1,2,3,4, Co-  
Editor 4.



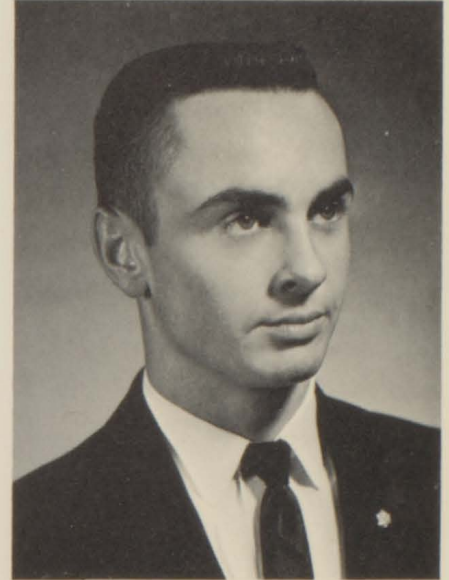
VIRGINA POWER  
F.H.A. 1,2; Intramurals 2; Pep  
Club 1,2,3; Sphinx Staff 4.



**JIM SATORIUS**

Baseball 1,3,4; Basketball 1,2,3,4; F.F.A. 1,2,3,4; Football 1,2,3,4; Letterman's Club 3,4; Livestock Judging 2,3,4; Pep Club 1,2,3; Office Receptionist 2,3; Poultry Judging 2; Projectionist 3,4; Speech Club 1,2,3,4; Sphinx Staff 4; Track 1,2,3,4; Varsity Club 3,4.

**BRENDA SCHNAPP**  
Tallula 1,2,3; Cheerleader 2, Alternate 1; Chorus 1,2; Contest Band 2; Contest Chorus 1,2; F.H.A. 1,2,3,4; F.T.A. 1,2,3,4; Library Staff 4; National Honor Society 4; Student Council 1; G.A.A. 1,2,3,4, V.Pres.



**JERRY SMITH**

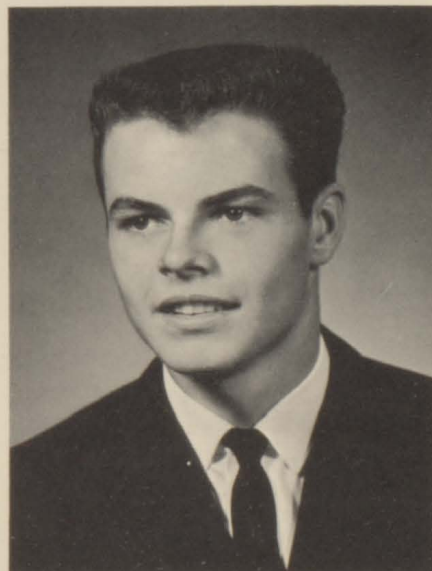
Christmas Play 2; Football 1,3; Key Club 2,3,4; National Honor Society 3,4; Pep Club 1,2,3; Science Club 1; Speech Club 1,2; Sphinx Staff 4; Student Council 3.



**JOHN SMITH**

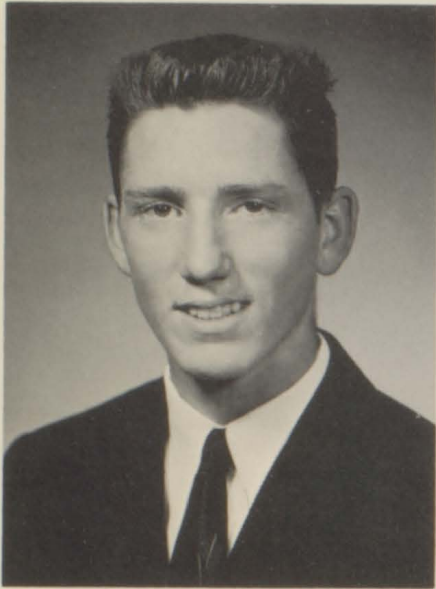
Football 1,2,3; Letterman's Club 2,3; Pep Club 1,2,3; Sphinx Staff 4.

**LARRY SMITH**  
Baseball 1,2,3,4; Basketball 1,2,3,4; Class Officer 2, V.P., 3, Treas.; F.F.A. 1,2,3,4; Football 1,2,3,4; Grain Judging 2,3; Key Club 2,3,4; Land Judging 1; Letterman's Club 1,2,3,4; Livestock Judging 2,3,4; Pep Club 1,2,3; Poultry Judging 3,4; Projectionist 2; Speech Club 4; Sphinx Staff 4; Track 1,2; Varsity Club 1,2,3,4.



**KAREN STILTZ**

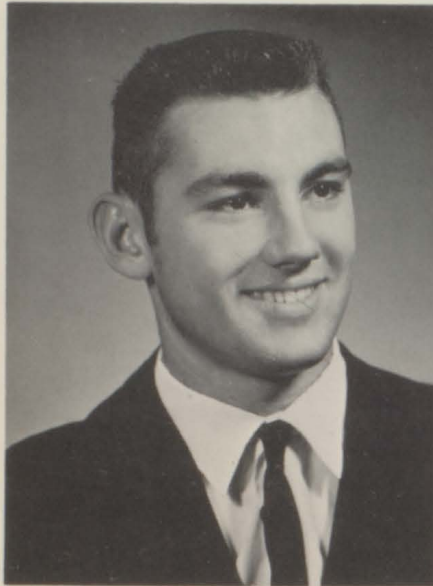
Tallula 1,2,3; Cheerleader 1,3; Chorus 1,2,3,4; Chorus Ensemble 3,4; Christmas Play 1,2,3; Class Officer 1,3, Reporter; Contest Chorus 1,2,3,4; F.H.A. 2,3,4; F.T.A. 1,2,3; Library Staff 1,2,4; National Honor Society 4; Sphinx Staff 4; G.A.A. 1,2,3,4; Tallula Plays 3.



DAVID TAAPKEN

Civil Service 4; F.F.A. 1,2,3,4;  
Projectionist 2,3,4; Sphinx Staff 4;  
Meat Judging 3.

JOHN TEDDER  
Tallula 1,2,3; Baseball 1,2,3,4;  
Basketball 1,2,3,4; Chorus 1,2,3;  
Christmas Play 1,2,3; F.F.A. 4;  
Football 4; F.T.A. 2,3,4; Home-  
coming Escort 4; Junior Play 3;  
Letterman's Club 1,2,3,4; Library  
Staff 2,3; Speech Club 4; Student  
Council 3; Track 4; Varsity Club  
1,2,3,4; Tallula Plays; Sweet-  
heart Escort 1,2,3.



DAVID THOMAS

Baseball 1,2,3,4; Basketball 1,2,  
3,4; Football 1,2; Letterman's  
Club 1,2,3; Pep Club 1,2,3; Track  
1; Varsity Club 1,2,3; Sphinx Staff  
4.



LARRY VOGT

Christmas Play 1,2; F.F.A. 1,2,3,4;  
Football 4; Homecoming Escort 4;  
Letterman's Club 4; Junior Play 3;  
Livestock Judging 3,4; Pep Club  
1,2,3; Office Receptionist 2,3;  
Speech Club 1,2,3; Sphinx Staff 4;  
Varsity Club 4.

NANCY WATKINS  
Chorus 2,3,4; Chorus Ensemble 4;  
Civil Service 4; F.H.A. 1,2,3,4;  
F.H.A. Parliamentarian 4; F.H.A.  
Rec. Chairman 3; Contest Chorus  
3,4; Intramurals 2; Library Staff 2;  
Speech Club 2,3; Sphinx Staff 4;  
G.A.A. 4.



DENNIS WETHINGTON

Class President 2; Junior Play 3;  
Pep Club 1,2,3; Sphinx Staff 4;  
Student Council 1.

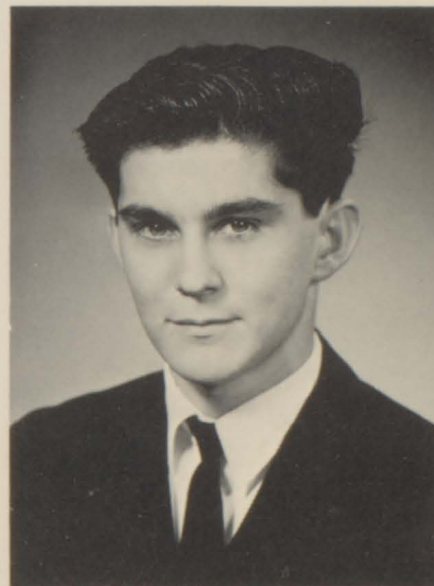
GARTH WHISNANT

Tallula 1,2,3; Band 3,4; Boys'  
Chorus 3; Class Officer 1,2, Pres.;  
Contest Band 3,4; Contest Chorus  
3; Dance Band 3; F.F.A. 3,4;  
Marching Band 3,4; National Honor  
Society 4, Pres. 4; Sphinx Staff 4.



LARRY WILSON

Pep Club 1,3; Projectionist 3,4;  
Chairman 4; Sphinx Staff 4.



Time is running out and our days are numbered as seniors of Harris High. During these hectic, fun-filled days, we often pause to reflect on the years gone by. It hardly seems possible that we are the same students who entered these halls a few years ago. In a very short length of time, we have shared many memorable experiences: initiation, stunt, prom, parties, and plays. We have been fortunate in having class officers and sponsors of high caliber. We are greatly indebted to these leaders for making our school years more enjoyable. We are especially thankful to those faculty members who have guided us through this last important year: Mrs. Satorius, Mr. Bassana, Mr. Young, Mr. Knappmeyer, Mrs. Hodgson, and Mr. Haddick.

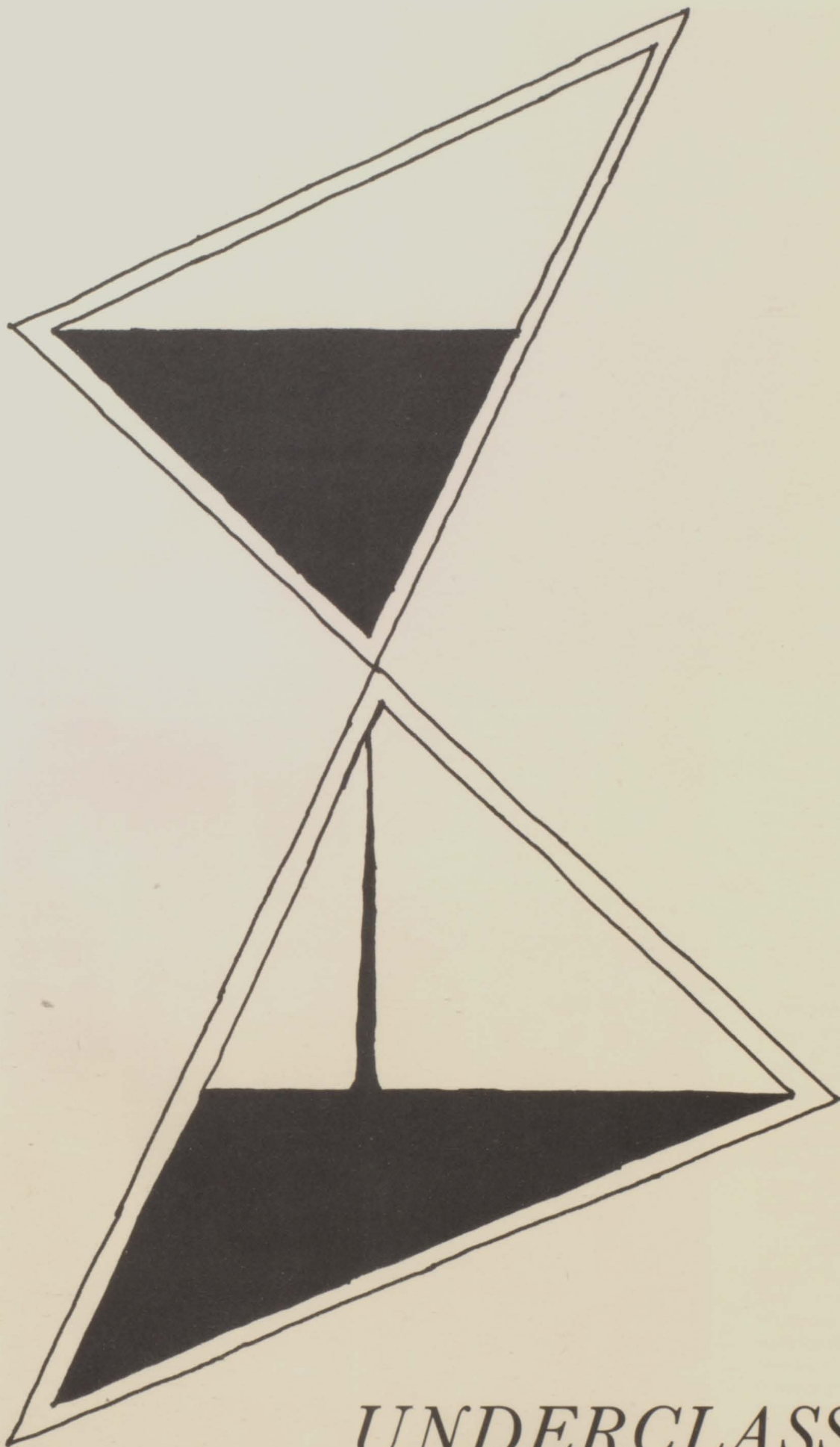
An experience which has been richly rewarding is that of having the Tallula class with us for this past year. We have derived benefits from the new unit in the number of friends made.

Now, as we look ahead, graduation seems almost too close. Some of us must still make significant decisions concerning the future. We are ready, however, to accept the challenges which lie before us, knowing that "The past is prologue."



1. John McCombs; 2. Gloria Gronewold; 3. Jim Brown; 4. Sally Nance; 5. Karen Stiltz; 6. Brenda Peters; 7. Brenda Schnapp; 8. Ilene Kinney; 9. Barbara Lott; 10. Katie Moulton; 11. Nancy Conn; 12. Pam MacLeod; 13. Barbara Niemeier; 14. Lenore Dunn; 15. Roberta Goans; 16. Virginia Powers; 17. Garth Whisnant; 18. John Tedder; 19. Linda Cox; 20. Larry Smith; 21. Rose Grossbaier; 22. Donna Cherry; 23. Floyd Grogan; 24. Jim Moss; 25. Deny Lynn; 26. Judy Balster; 27. Raymond Grover; 28. Jeanette MacDougal; 29. Judy Gronewold; 30. Mary Lee Nielson; 31. Barbara Janssen; 32. Hugh Bill Faith; 33. John Cummings.





*UNDERCLASSMEN*



CLASS OFFICERS

- President . . . . . Phil Belton  
 Vice-Pres. . . . . Gary Schnapp  
 Sec.-Treas. . . . . Ardith Whalen

CLASS SPONSORS

- Mrs. Showalter . . . . . Chairman  
 Mrs. Abbott  
 Mr. Braun  
 Mr. Frey  
 Mrs. Wankel

Carolyn Aden  
 Robert Albert  
 Barbara Angotti



JUNIORS



Linda Armstrong  
 L. Arnold  
 Barbara Apken  
 Bill Bailey  
 Esther Beaty  
 Nick Bell



Phillip Belton  
 Marsha Boske  
 Lois Brauer  
 Ella Mae Brown  
 JoAnn Brown  
 Don Bryant



Gary Buracker  
 Joan Burkholder  
 Linda Byers  
 Edna Carpenter  
 Phyllis Carter  
 Carolyn Chambers





Margaret Clark  
Phyllis Cline  
Cecil Collins  
Mary Connor  
Bill Cook  
Mike Cooper



Richard Cummings  
Carroll Daubard  
Paul Davis  
Steve Dawson  
Alice Dick  
Judy Dick



Ronnie Dowell  
Bill Eckhoff  
Gloria Ed  
Mike Eddings  
Linda Engel  
Larry Evers



Steve Feagans  
Geraldine Fillbright  
Patty Fricke  
Sandy Garner  
Linda Geriets  
David Grossbaier



Cathie Grosboll  
Connie Grosboll  
Sue Grosboll  
Bill Grosboll  
Rita Guinan  
Patty Gum



Jim Haddick  
Gary Hager  
David Hinch  
Linda Hinrichs  
Lila Houseman  
Albert Hughes



Larry Humphrey  
Bill Kasten  
Buddy King  
Diana Klauzer  
Linda Kording  
Sharon LeMar



Sharon Lounsberry  
Tom Lounsberry  
Marty Lynn  
Roszeta Lynn  
Sue MacLeod  
Russell McClure

Larry Magee  
 Harry Markert  
 Jane Meece  
 Richard Miller  
 Barbara Minor  
 Penny Montgomery



Charles Morgan  
 Anna Nance  
 Kathy Nissen  
 Harlan Noel  
 Larry Nottingham  
 Larry Ortman



David Pantier  
 George Paulen  
 Mildred Pedigo  
 Dennis Pike  
 Carol Pillsbury  
 Cheryl Pillsbury



Ronnie Pond  
 Larry Pritchett  
 Rodney Rhodes  
 Randy Robbins  
 David Rogers  
 Marlyn Sargeant



Harry Schirring  
 Gary Schnapp  
 Russell Sexton  
 Sally Shaw  
 Pauline Smith  
 Linda Stith



Steve Stout  
 Brenda Stroh  
 Rita Theilen  
 Carol Thomas  
 Barbara Tibbs  
 Dennis Vaughn



Bob Vestal  
 Joyce Vice  
 Terry Wallace  
 Ardith Whalen  
 Janet White  
 Lana Winkleman



Wilma Winkleman  
 Richard Winner  
 Sam Wood  
 Ken Zuhlke





CLASS OFFICERS

- President . . . . . Allen Thomas  
 Vice-President . . . . . Chris McCombs  
 Secretary . . . . . Ed Satorius  
 Treasurer . . . . . Greg McNeil

CLASS SPONSORS

- Mr. Bagby . . . . . Chairman  
 Miss Dudney  
 Mr. Clark  
 Mr. Long  
 Dr. Ott



*SOPHOMORES*





Vernie Ames  
 Connie Anderson  
 Susan Balster  
 Jerry Beard  
 William Belton



Sandra Blair  
 Linda Boyer  
 Cheryl Bradley  
 Mary Jane Brauer  
 Lou Ellen Bumgardner  
 Wayne Calhoun



Mike Carter  
 Larry Cheney  
 Sara Claussen  
 Joyce Cline  
 Libby Cobb  
 Dave Crawford



Terry Cutright  
 George Davis  
 Royce Davis  
 Sara Dawson  
 Eva Dugger  
 Jim Duncheon



Donald Eckhoff  
 Judy Eddings  
 Don Ericson  
 Billy Fielden  
 Mary Jane Fricke  
 Charles Fortney



David Fulton  
 Terry Grant  
 John Grosboll  
 David Gum  
 Diana Hayden  
 Kenny Haynes



Lynne Hendricker  
 Greg Hinrichs  
 Marsha Hitchcock  
 Bonnie Hohimer  
 Sam Hopper  
 Alan Horn



Joyce Humphrey  
 Tim Hurie  
 Carolyn Hurley  
 Wayne Jones  
 Joann Kelley  
 Michael Kern





Bobette Knoles  
 Harry Knoles  
 Cyndy Knuppel  
 Donald Kording  
 Sherry Krueger  
 Linda Lucht



Larry Lutes  
 Caryll Martin  
 Susan Masten  
 Chris McCombs  
 Nora McCool  
 Greg McNeal



Wanda Miller  
 Connie Morgan  
 Richard Nichols  
 James Niemeier  
 Bill Nolting  
 Janet Nottingham



David O'Hara  
 Robert Otto  
 Bobby Power  
 Larry Power  
 Donna Power  
 Penny Rule



Susan Sathoff  
 Ed Satorius  
 David Schastisiek  
 Patricia Sears  
 Jane Shaw  
 Connie Shipley



Sue Shockey  
 Richard Sinclair  
 Laura Smith  
 Steve Smith  
 Brenda Snyder  
 Russell Stone



Rose Mary Terry  
 Allen Thomas  
 Rose Ann Thomas  
 John Thurman  
 Elsie Todd  
 Jack Traylor



Patricia Weatherby  
 Willy White  
 Sherry Whitehead  
 Danny Willis  
 Phyllis Woods  
 Bruce Worthington



CLASS OFFICERS

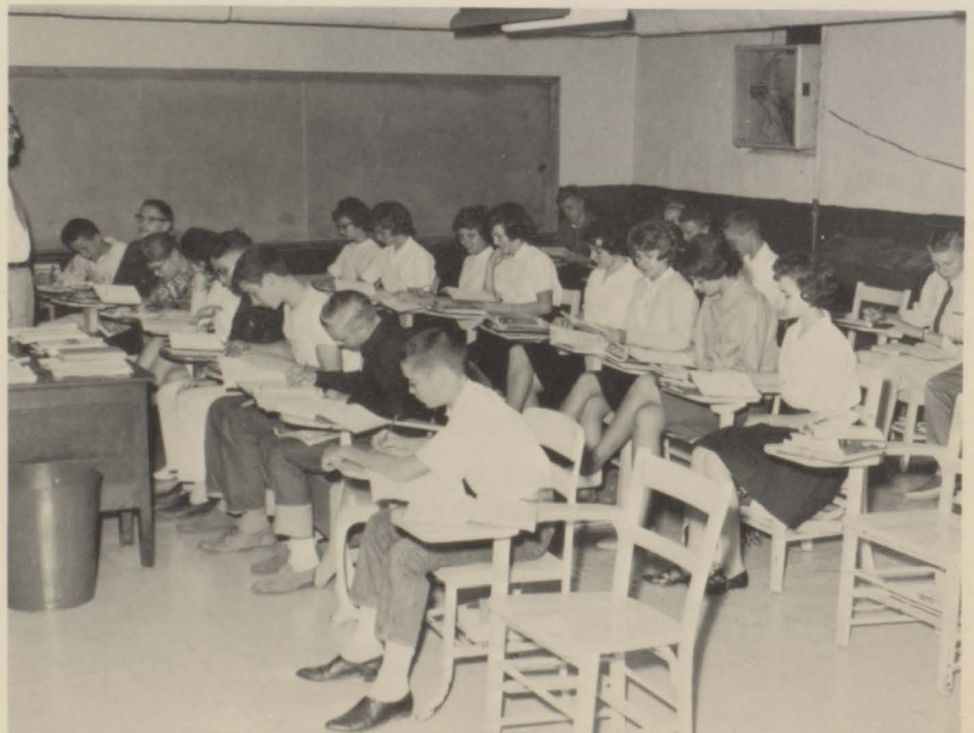
- President . . . . . Mike Gronewold  
 Vice-Pres. . . . . Dale Nissen  
 Secretary . . . . . Terry Dowell  
 Treasurer . . . . . Karen Loeffler

CLASS SPONSORS

- Mr. Worthington  
 Mrs. Janssen  
 Miss Holloway  
 Mr. Sandusky



*FRESHMEN*







Kenneth Albert  
James Allen  
Eddie Angotti  
Janet Armstrong



Linda Atterberry  
David Atwood  
Tommy Backs  
Tim Baker



Susan Barbee  
Michele Basso  
Larry Bradley  
Janice Brass  
Susan Bricker



Penny Brockman  
Mae Brown  
Archie Brown  
Brenda Brown  
Bob Calhoun  
Clara Cummings



Jim Davis  
Terry Dowell  
Donald Edwards  
Bonnie Fillbright  
Marcia Fricke  
John Godbey



Mike Gronewold  
Jean Grossbaier  
Jimmie Grossbaier  
Mary Pat Guinan  
Arnold Hinds  
Lois Hinrichs



Billy Hinrichs  
Larry Horn  
Jeanie Humphrey  
Mary Jane Humphrey  
Carolyn Janssen  
Shirley Janssen



Lottie Klauzer  
Darlene Knoles  
Tommie Knous  
Robert Kording  
Robert Krueger  
Karen Loeffler

Sally Lounsberry  
Lana Lucht  
Freddy McAllister  
Pamela Melcher



David Miles  
Paul Montgomery  
Carl Morgan  
Preston Morgan



Joan Schastisiek  
Robert Morrison  
Rhonda Sue Moss  
Dale Nissen  
Gary Ortman  
Sheila Ortman



Steve Payne  
Cathy Pike  
Wayne Pike  
Bruce Pillsbury  
Johnny Prater  
David Preston



Jenny Pringle  
Tommy Raikes  
Jacqueline Rebbe  
Edward Schaad  
Wanda Sharp  
Jon Small



Dennis Smith  
Mary Smith  
Linda Steinkruger  
Dick Stiltz  
Mary Stout  
Sandra Stroh



Linda Strowig  
Edwin Taapken  
Richard Taapken  
Gene Tressler  
Linda Tuttle  
Tommy Vogt

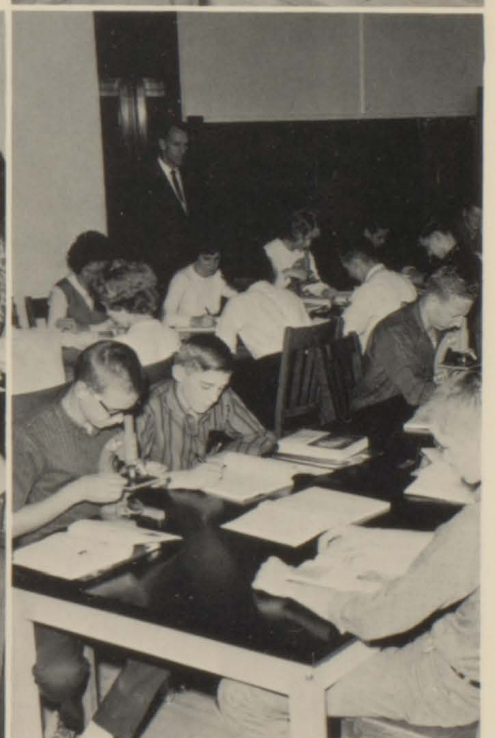


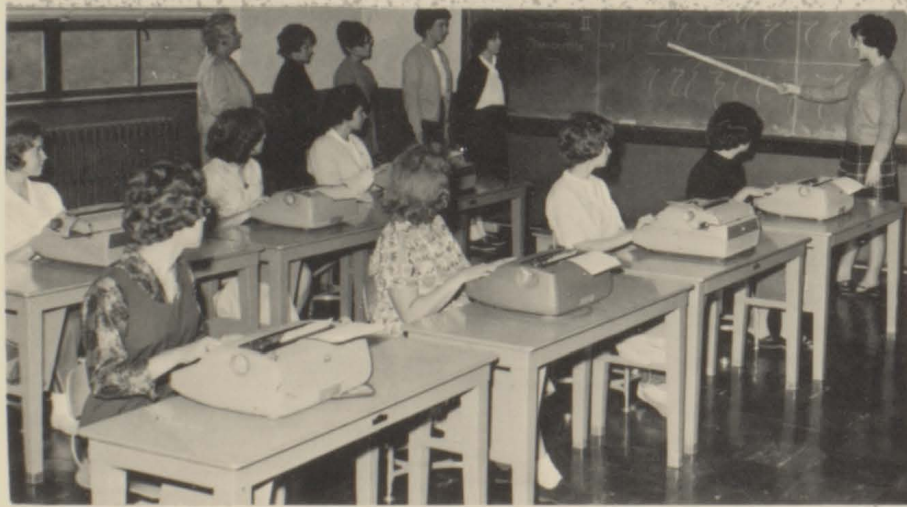
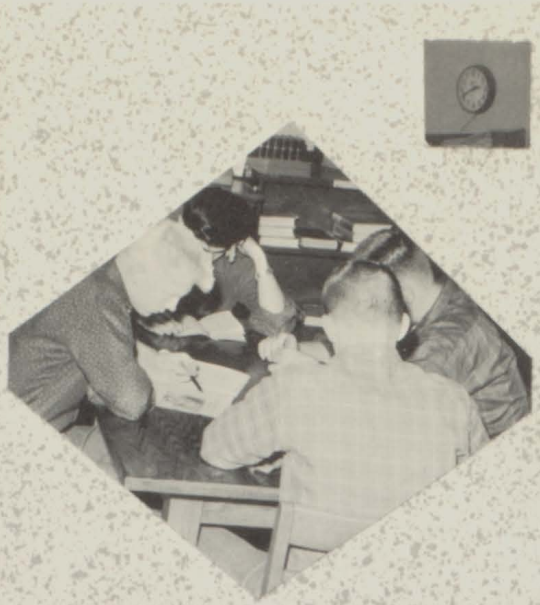
Danny Wallace  
Linda Wethington  
Beverly Winkleman  
Wayne Winkleman  
John Wood  
Wayne Woods

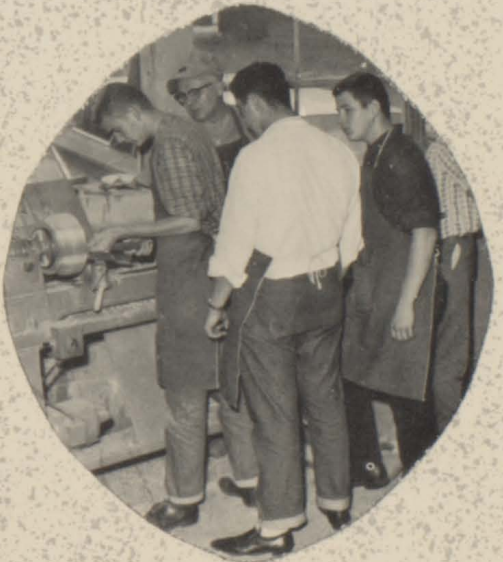


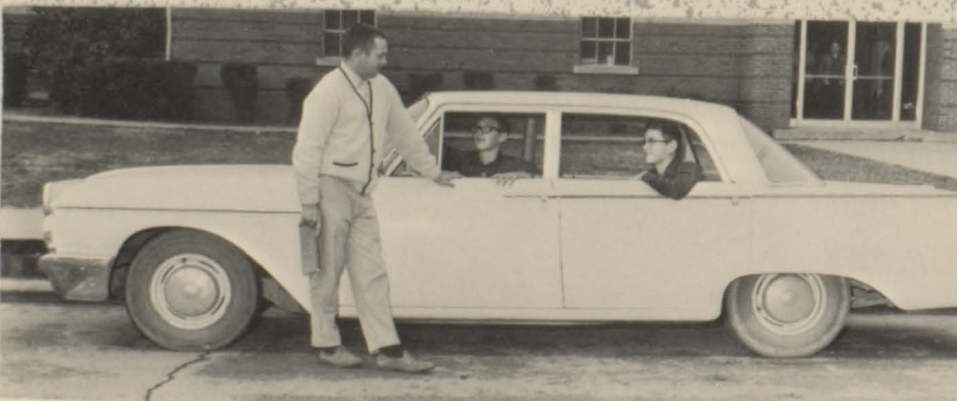


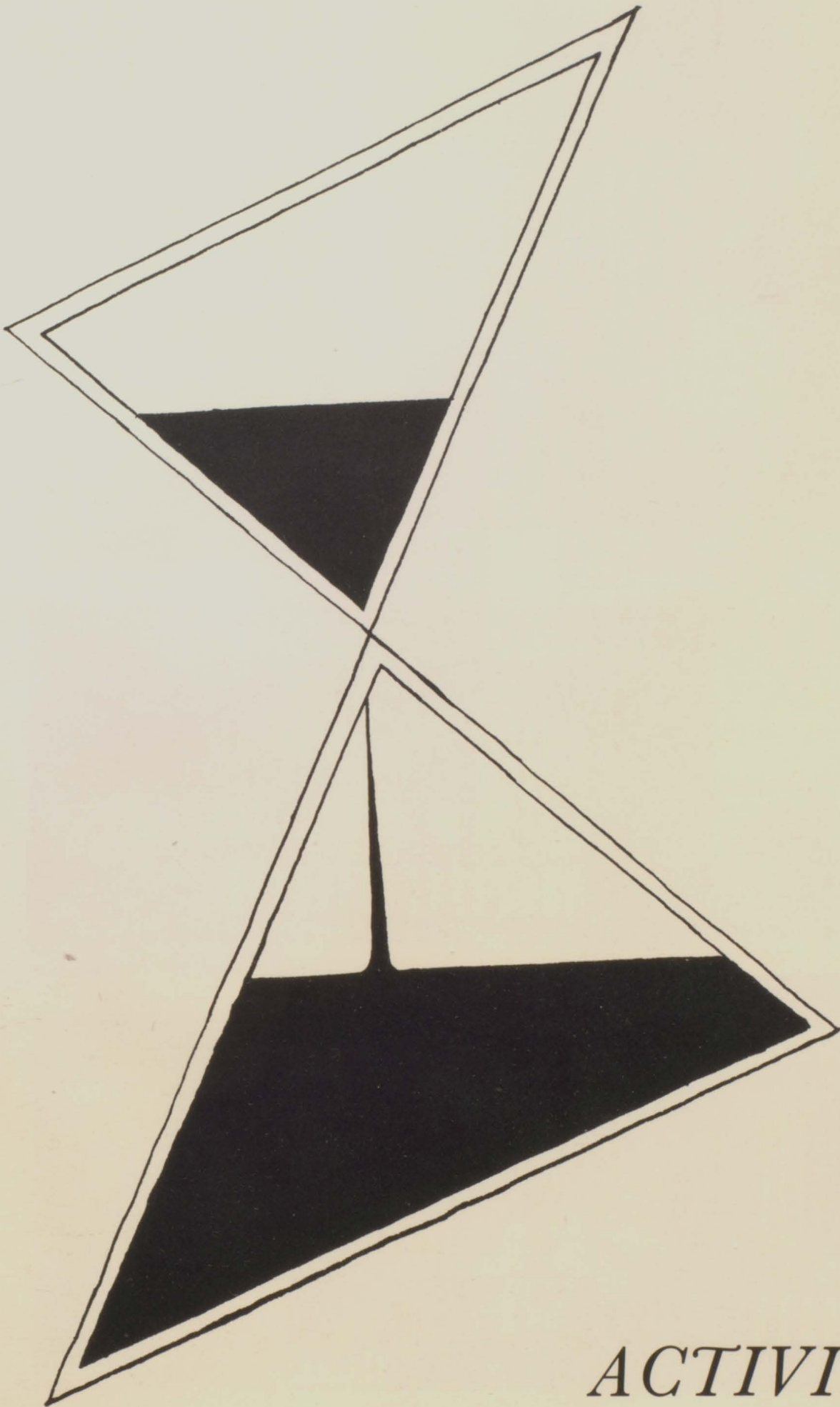
P  
O  
R  
T  
A  
  
P  
E  
O  
P  
L  
E







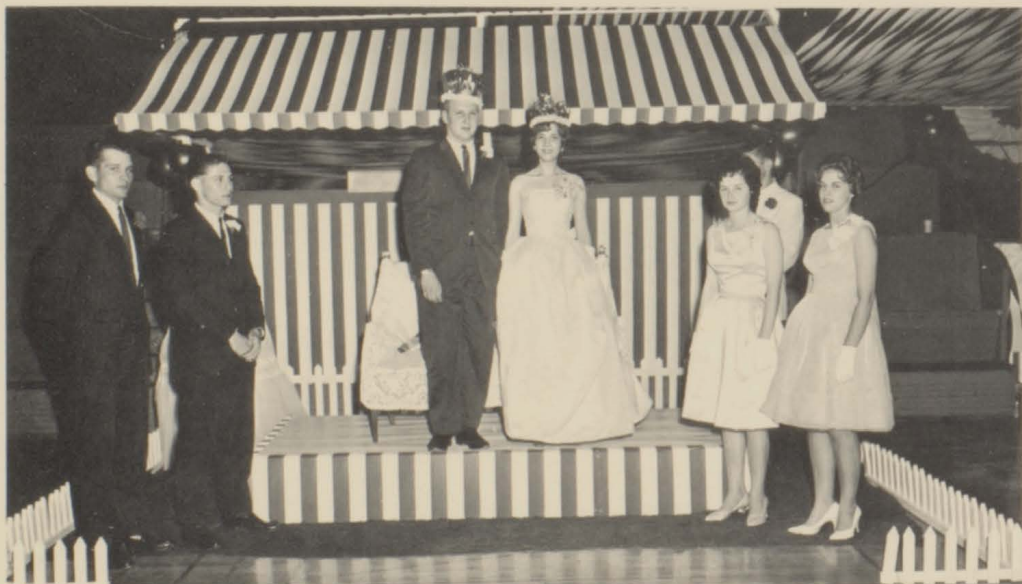




*ACTIVITIES*



P  
R  
O  
M



1963





*MAY  
17,  
1963*





Homecoming Queen--Pam MacLeod





*HOMECOMING 1963*





## *“THE FAMILY NOBODY WANTED”*



### CAST

Reverend	David Hinch
Mrs. Helen Doss	Cathie Grosboll
Donny Doss	Larry Nottingham
Nan Johnson	Sue Grosboll
	Barb Apken
Mr. Johnson	Randy Robbins
Mrs. Johnson	Patty Fricke
Miss Reilly	Esther Beaty
Bill Thomas	Mike Eddings
Mrs. Parkinson	Carol Pillsbury
Mrs. Allen	Roszeta Lynn
Mrs. Hardy	Cheryl Pillsbury
Diane	Linda Geriets
Laura	Connie Grosboll
Rita	Linda Kording
Timmy	Billy Grosboll
Ted	Kenneth Zuhlke
Alex	Harry Schirding

## *JUNIOR PLAY*

DONNA CHERRY  
(Alice)



JERRY LIBBEN  
(Willoughby)

ELLEN KLAUZER  
(Inner Alice)



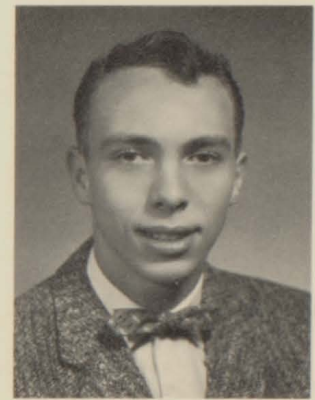
# THE OTHER YOU

## CAST

Willoughby Adams . . . . .	Jerry Libben
Inner Willy . . . . .	Vernie Garvin
Sidney Roscoe . . . . .	Bob Morgan
Mr. Allison . . . . .	Larry Vogt
Aunt Hester . . . . .	Barbara Lott
Aunt Louise . . . . .	Karen Stiltz
Aunt Olga . . . . .	Bonnie Barbee
Alice Martin . . . . .	Donna Cherry
Rita Clark . . . . .	Judy Gronewold
Joyce Thompson . . . . .	Katie Moulton
Inner Alice . . . . .	Ellen Klauzer
Aunt Phoebe . . . . .	Connie Edwards
Director . . . . .	Mrs. Abbott



BOB MORGAN  
(Sidney)



VERNIE GARVIN  
(Inner Willy)





DON BRAUER  
D.A.R. Award



JUDY GRONEWOLD  
D.A.R. Award

A  
W  
A  
R  
D  
S

1  
9  
6  
4



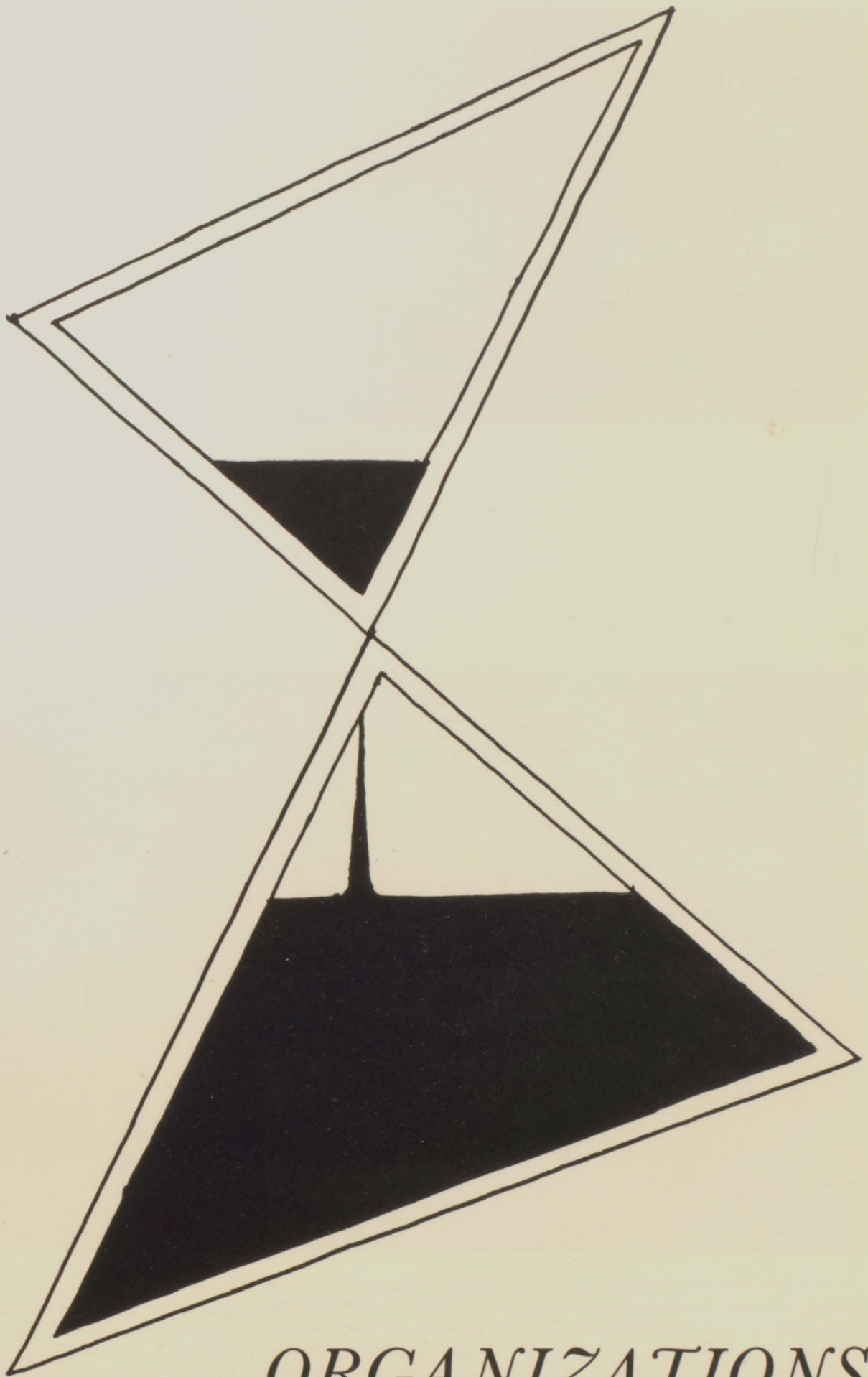
BONNIE BARBEE  
Betty Crocker  
Homemaker of Tomorrow



BARBARA TIBBS  
School Band of America



BARBARA JANSSEN  
School Chorus of America

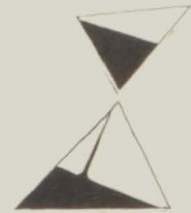


*ORGANIZATIONS*



**SALES STAFF**

Don Brauer, Rod Boeker, Jim Brown, Dave Thomas, Larry Smith, David Cheney, Jerry Smith, Jim Higginbotham, Mike Koke, and Steve Hollis.



*SPHINX*



TOP ROW: Jim Higginbotham, Rick Juergens, Gail Patrick, Vernie Garvin, Jack Kelley, John Cummings, Dennis Wethington, David Barbee, Larry Smith. FOURTH ROW: Barbara Lott, Connie Shipley, Gloria Gronewald, Karen Stiltz, Jannette McDougal, Sally Lounsberry, Linda Gordon, Brenda Schnapp. THIRD ROW: Raymond Grover, John McCombs, William Barnett, Mike Cobb, Jim Brown, Don Gillmore, Larry Bradley. SECOND ROW: Lois Hinrichs, Linda Hinrichs, Nancy Watkins, Nancy Conn, Connie Behrends, Roberta Goans, Janice Arnold, Connie Edwards. SEATED: Joyce Cline, Mary Lee Nielsen, Pam MacLeod, John Tedder, John Crawford, Ed Backs, Larry Eddings, Mike Koke.



PRODUCTION STAFF

Karen Stiltz, Brenda Peters, Katie Moulton, Bonnie Barbee, Barbara Lott, Barbara Janssen, Steve Finney, Donna Cherry, Mrs. Wankel.



STAFF



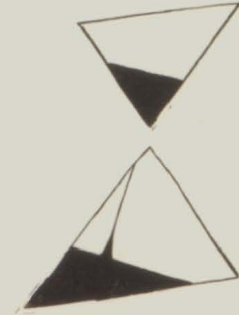
TOP ROW: Larry Vogt, Steve Finney, Jerry Libben, Hugh Bill Faith, Roger Hill, Don Brauer, David Thomas, Garth Whisnant, Jim Satorius, Bob Morgan. FOURTH ROW: Linda Cox, Paula Boske, Ilene Kinney, Penny Rule, Virginia Power, Christine Martin, Judy Gronewold, Ellen Klauzer, Sally Nance, Barbara Niemeier. THIRD ROW: David Taapken, David Otto, Rod Boeker, John Smith, Jim Moss, Gene Horn, Bob Kemp, Larry Wilson, Steve Hollis, Ed Schaad. SECOND ROW: Judy Atterberry, Karen McCool, Judy Balster, Rose Grossbaier, Bonnie Barbee, Lana Winkelmann, Linda Kording, Beverly Winkelmann, Katie Moulton, Harry Schirding, Jerry Smith, David Hinch. SEATED: Linda Albert, Mrs. Wankel, Brenda Peters, Barbara Janssen, Donna Cherry, Mrs. Satorius, Sue Lounsberry.



# LIBRARY STAFF

## OFFICERS

President . . . . . Sharon LeMar  
 V. President . . . . . Brenda Stroh  
 Sec.-Treas. . . . . Linda Cox  
 Co-chairmen of Projectionists . . . . Larry  
 Wilson, Ken Zuhlke.



"Some books are to be tasted, others to be swallowed, and some few to be chewed and digested."

Bacon



TOP ROW: Sharon Lounsberry, Esther Beaty, Rita Theilen, Nancy Conn, Donna Cherry, Karen Stiltz, Ellen Klauzer, Linda Engel, Phyllis Carter, Paula Boske. SECOND ROW: Lana Lucht, Margaret Clark, Beverly Winklemann, Gloria Gronewald, Roberta Goans, Cheryl Pillsbury, Carol Pillsbury, Linda Kording, Brenda Peters, Barbara Janssen, Connie Behrends, Connie Edwards, Janet White. SEATED: Katie Moulton, Mrs. Peterson, Linda Cox, Sharon LeMar, Brenda Stroh, Judy Gronewold.



TOP ROW: David Hinch, Barbara Tibbs, Judy Gronewold, Lois Brauer, Christine Martin, Brenda Stroh, Sharon LeMar, Sally Shaw, Donna Cherry, Jerry Smith. THIRD ROW: Ken Zuhlke, Larry Nottingham, David Cheney, Larry Evers. SECOND ROW: Roberta Goans, Karen Stiltz, Ardith Whalen, Lana Winkelmann, Bonnie Barbee, Rita Theilen, Cathie Grosboll, Joan Burkholder, Patty Fricke, Linda Albert, Sue Grosboll. SEATED: Mrs. Satorius, Don Brauer, Garth Whisnant, Barbara Janssen, Brenda Peters, Mr. Young.

## NATIONAL HONOR SOCIETY

### OFFICERS

President . . . . .	Garth Whisnant
Vice-Pres. . . . .	Don Brauer
Treasurer . . . . .	Barbara Janssen
Advisors . . . . .	Brenda Peters
	Mrs. Satorius
	Mr. Young





# GIRLS' ATHLETIC ASSOCIATION

## CO-OFFICERS

Presidents . . . . .	Linda Cox, Barbara Janssen
Vice-Presidents . . . . .	Brenda Schnapp, Brenda Stroh
Secretaries . . . . .	Phyllis Cline, Barbara Niemeier
Treasurers . . . . .	Pam MacLeod, Lana Winkelmann
Advisor . . . . .	Mrs. Showalter



TOP ROW: Lois Brauer, Bonnie Hohimer, Jane Brauer, Marcia Fricke, Marlyn Sargeant, Christine Martin, Joyce Cline, Wilma Winkelmann, Judy Gronewold, FOURTH ROW: Ella Mae Brown, Sherry Whitehead, Jackie Rebbe, Linda Engel, Brenda Snyder, Susan Masten, Rita Theilen, Kathy Nissen, Sandy Stroh. THIRD ROW: Carolyn Hurley, Roszeta Lynn, Carolyn Chambers, Carol Pillsbury, Patricia Sears, Marsha Boske, Joan Burkholder, Ardith Whalen, Beverly Winkelmann. SECOND ROW: Linda Byers, Janice Brass, Jeanie Humphrey, Susan Sathoff, Mary Humphrey. SEATED: Mrs. Showalter, Lana Winkelmann, Brenda Stroh, Phyllis Cline, Barbara Janssen, Linda Hinrichs.

## ACTIVITIES

Softball  
Basketball  
Volleyball  
Bowling  
Hiking  
Camping  
Swimming  
Field Hockey



TOP ROW: Edna Carpenter, Barbara Lott, Penny Rule, Laura Smith, Penny Brockman, Karen Stiltz, Jo Ann Schastsiek, Sharon Lounsberry, Sue MacLeod. FOURTH ROW: Sandy Blair, Caryll Martin, Pam Melcher, Linda Stith, Patty Weatherby, Sally Lounsberry, Nancy Watkins, Joyce Humphrey, Diana Hayden. THIRD ROW: Janet Nottingham, Connie Shipley, Jane Meece, Jane Shaw, Paula Boske, Cheryl Pillsbury, Katie Moulton, Sandy Garner. SECOND ROW: Jo Ann Brown, Lois Hinrichs, Wanda Sharp, Cathy Pike, Karen Loeffler, Elsie Todd, Lynne Hendricker, Penny Montgomery, Marsha Hitchcock, Mae Brown. SEATED: Mrs. Showalter, Linda Geriets, Sharon LeMar, Brenda Schnapp, Barbara Niemeier, Linda Kording, Pam MacLeod, Linda Cox.

# FUTURE HOMEMAKERS

## CO-OFFICERS

Presidents . . . . .	Judy Gronewold, Brenda Schnapp
Vice-President . . . . .	Connie Behrends
Secretary . . . . .	Barbara Niemeier
Treasurers . . . . .	Bonnie Barbee, Pam MacLeod
Advisor . . . . .	Miss Holloway



TOP ROW: Linda Tuttle, Wilma Winkleman, Bonnie Fillbright, Rita Guinan, Laura Smith, Mary Lee Nielsen, Eva Dugger, Norma Meece, Marsha Boske, Jo Ann Kelley. FOURTH ROW: Nancy Watkins, Paula Boske, Gloria Gronewald, Kathy Nissen, Pauline Smith, Patty Weatherby, Bobette Knoles, Caryll Martin, Carol Thomas, Linda Cox. THIRD ROW: Rose Mary Terry, Darlene Knoles, Linda Geriots, Sue Shockey, Nora McCool, Joan Burkholder, Linda Lucht, Linda Boyer, Elsie Todd, Brenda Brown. SECOND ROW: Connie Anderson, Margaret Clark, Barbara Minor, Sara Dawson, Lottie Klauzer, Susan Barbee, Janet White, Susan Sathoff. SEATED: Miss Holloway, Pam MacLeod, Connie Behrends, Brenda Schnapp, Judy Gronewold, Barbara Niemeier, Bonnie Barbee, Linda Kording.

# OF AMERICA

FLOWER: Red Rose  
MOTTO: "Toward New Horizons"  
COLORS: Red and White



TOP ROW: Joyce Vice, Joyce Humphery, Brenda Snyder, Linda Stith, Linda Steinkruger, Ellen Klauzer, Sue MacLeod, Nancy Conn. THIRD ROW: Michele Basso, Judy Dick, Clara Cummings, Wanda McClure, Sandy Garner, Ella Mae Brown, Karen McCool, Carolyn Chambers. SECOND ROW: Alice Dick, Lila Houseman, Wanda Sharp, Phyllis Brown, Jean Grossbaier, Susan Bricker, Connie Edwards, Lana Lucht. SEATED: Jane Meece, Patty Gum, Sharon LeMar, Phyllis Carter, Karen Stiltz, Gloria Ed, Jannette McDougall, Geraldine Fillbrigt.

# FUTURE FARMERS OF AMERICA



## OFFICERS

President . . . . . Larry Smith  
 Vice-Pres. . . . . Don Brauer  
 Secretary . . . . . Jim Brown

Treasurer . . . . . Steve Hollis  
 Reporter . . . . . Larry Evers  
 Sentinel . . . . . Ed Backs

Advisor . . . . . Mr. Worthington



TOP ROW: Hugh Bill Faith, Larry Magee, Allen Thomas, Richard Miller, John Crawford, Garth Whisnant, John Tedder, Jim Satorius, Bob Albert, Charles Morgan. FOURTH ROW: Dick Stiltz, Jim Moss, Carroll Daubard, Bruce Worthington, Larry Vogt, Harlan Noel, Mike Eddings, Jim Higginbotham, John Grosboll, Tom Vogt. THIRD ROW: David Crawford, Royce Davis, Harry Schirding, David Taapken, Jim Niemeier, Bill Nolting, Steve Smith, Jim Davis, Richard Nichols, Steve Dawson. SECOND ROW: Harry Knoles, Jack Trailor, John Prater, Gary Schnapp, Russell Sexton, Wayne Winklemann, Bob Vestal, John Wood, Richard Taapken. SEATED: Mr. Worthington, Larry Smith, Don Brauer, Jim Brown, Steve Hollis, Larry Evers, Ed Backs.





TOP ROW: Kenny Zuhlke, Larry Nottingham, David Cheney, Steve Finney, Harry Schirding, David Hinch. THIRD ROW: Sharon Lounsberry, Barbara Tibbs, Susan Masten, Karen Stiltz, Christine Martin, Judy Gronewold, Sue MacLeod, Brenda Schnapp. SECOND ROW: Barbara Niemeier, Phyllis Cline, Bonnie Barbee, Cathie Grosboll, Linda Kording, Sue Grosboll, Carol Pillsbury, Cheryl Pillsbury. SEATED: Mrs. Janssen, Bob Morgan, Ardith Whalen, Linda Hinrichs, Pam MacLeod, Lois Brauer, Lorna Arnold.

#### OFFICERS

President . . . . .	Bob Morgan
Vice-President . . . . .	Ardith Whalen
Secretary . . . . .	Linda Hinrichs
Treasurer . . . . .	Connie Grosboll
Parliamentarian . . . . .	Pam MacLeod
Historian . . . . .	Lois Brauer
Advisor . . . . .	Mrs. Janssen

# FUTURE TEACHERS OF AMERICA



# SPEECH CLUB

## OFFICERS

President . . . . .	Randy Robbins
Vice President . . . . .	Judy Gronewold
Secretary-Treasurer . . . . .	Connie Grosboll
Reporter . . . . .	Hugh Bill Faith
Advisor . . . . .	Mrs. Janssen

"All the world is a stage . . ."  
Shakespeare



TOP ROW: Larry Smith, Larry Nottingham, John Grosboll, Bob Morgan, David Cheney, Larry Evers, Jim Satorius, Vernie Garvin, Rod Boeker, Rick Juergens, FOURTH ROW: Linda Geriets, Lois Brauer, Sue MacLeod, Sharon LeMar, Christine Martin, Patty Fricke, Karen Stiltz, Barbara Tibbs, Susan Masten, Lou Bumgardner. THIRD ROW: Ardith Whalen, Roszeta Lynn, Lana Winklemann, Phyllis Cline, Linda Kording, Cathie Grosboll, Steve Hollis, Steve Finney, Harry Schirding, Ken Zuhlke. SECOND ROW: Carolyn Janssen, Karen McCool, Barbara Lott, Linda Steinkruger, Bonnie Barbee, Linda Atterberry, Cyndy Knuppel, Wanda Miller, Bill Grosboll. FRONT ROW: Judy Gronewold, Randy Robbins, Hugh Bill Faith, Mrs. Janssen, David Hinch. (C. Grosboll not present for picture)



*Speech Contest*

After-dinner Speaking . . . . .	Randy Robbins
Oratorical Declamation . . . . .	Susan Masten
Original Oration . . . . .	Karen Stiltz
Verse Reading . . . . .	Cyndy Knuppel

*"Balcony Scene"*

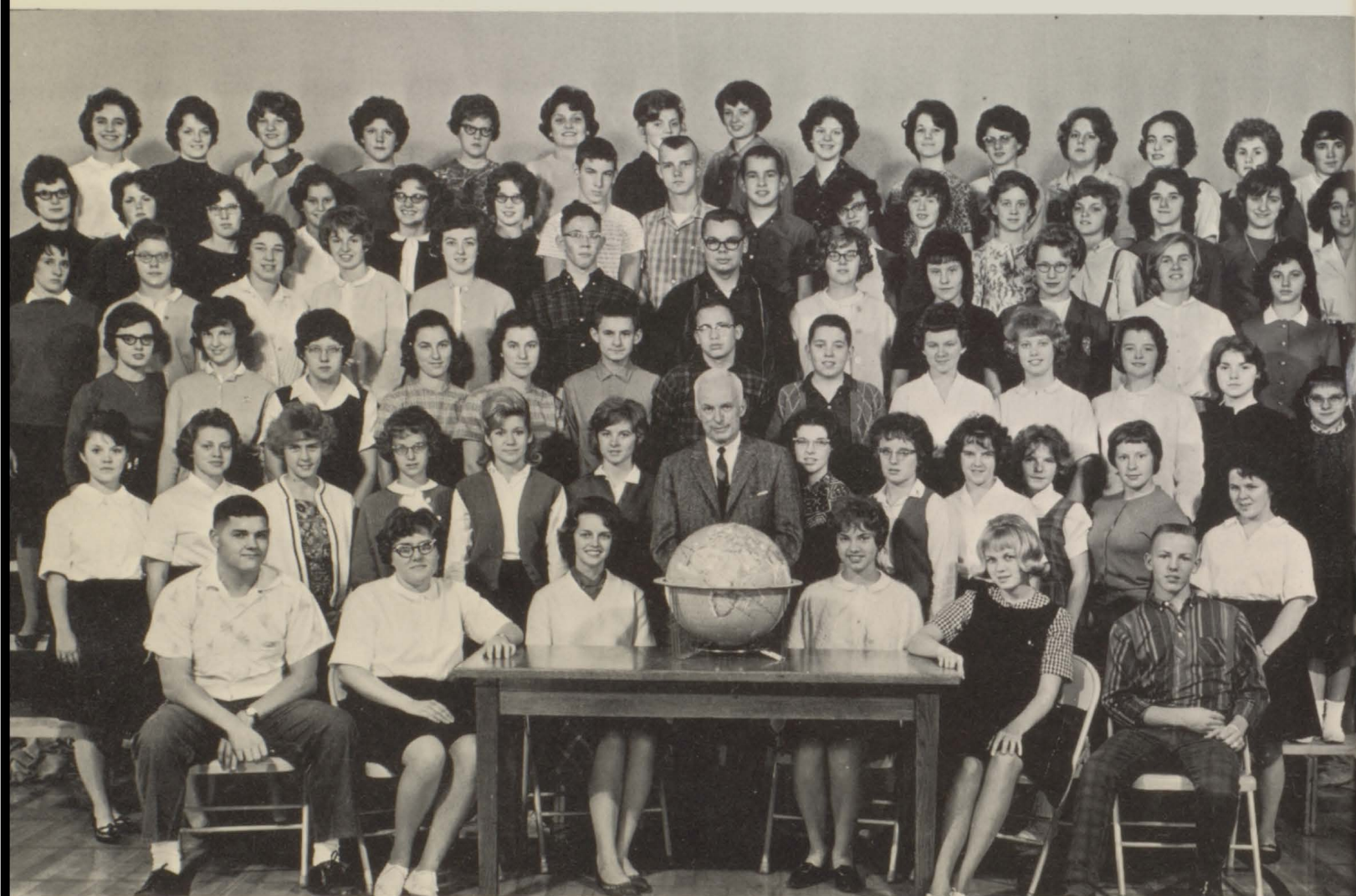
A Man . . . . .	Steve Finney
His Friend . . . . .	David Cheney
A Mother . . . . .	Linda Steinkruger
Her Daughter . . . . .	Sue MacLeod
A Wife . . . . .	Barbara Lott
Her Husband . . . . .	Bob Morgan
A Gangster . . . . .	Dennis Wethington
A Girl . . . . .	Patty Weatherby
Director . . . . .	Mrs. Janssen



# INTERNATIONAL STUDENT SOCIETY

## OFFICERS

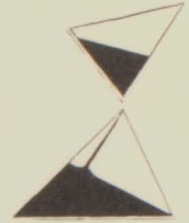
President . . . . .	Linda Hinrichs
Vice-President . . . . .	Judy Gronewold
Secretary-Treasurer . . . . .	Patty Fricke
Reporter . . . . .	Connie Behrends
Advisor . . . . .	Dr. Ott



TOP ROW: Sandy Blair, Mary Connor, Pam Melcher, Joan Burkholder, Bonnie Fillbright, Susan Masten, Lois Brauer, Penny Brockman, Sue MacLeod, Lorna Arnold, Rita Theilen, Geraldine Fillbright, Bonnie Barbee, Linda Geriets, Rose Ann Thomas. FIFTH ROW: Sandy Garner, Cathy Pike, Janet Nottingham, Linda Atterberry, Roszeta Lynn, Lana Winkelmann, Bruce Pillsbury, Bill Eckhoff, Robert Kording, Lynne Hendricker, Kathy Nissen, Sandy Stroh, Karen Loeffler, Linda Engel, Linda Steinkrueger, Linda Kording. FOURTH ROW: Carolyn Janssen, Patty Weatherby, Sally Lounsberry, Marcia Fricke, Sue Lounsberry, Ed Schaad, Rodney Rhodes, Mary Jane Fricke, Carolyn Aden, Rita Guinan, Barbara Lott, Beverly Winkelmann. THIRD ROW: Ella Mae Brown, Jackie Rebbe, Judy Dick, Cheryl Pillsbury, Carol Pillsbury, Terry Grant, David Preston, Tim Hurie, Sherry Whitehead, Joyce Humphrey, Diana Hayden, Pennie Montgomery, Alice Dick. SECOND ROW: Wanda Miller, Susan Sathoff, Lottie Klauzer, Lois Hinrichs, Darlene Knoles, Mary Pat Guinan, Dr. Ott, Connie Morgan, Brenda Brown, Janice Brass, Doris Mitchell, Jo Ann Brown, Connie Anderson. SEATED: Larry Pritchett, Linda Hinrichs, Judy Gronewold, Patty Fricke, Connie Behrends, Cecil Collins.



# KEY CLUB



"We build."

## OFFICERS

President . . . . . Don Brauer  
 Vice-President . . . . . Jerry Smith  
 Secretary . . . . . David Hinch  
 Treasurer . . . . . Paul Davis

Advisor . . . . . Mr. Long

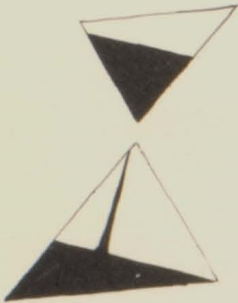


TOP ROW: John Grosboll, Rod Boeker, Ed Satorius, Harry Schirding, Bill Grosboll. SECOND ROW: Gene Horn, Steve Finney, Dennis Pike, Larry Nottingham, Randy Robbins, Larry Smith. SEATED: Mr. Long, Jerry Smith, Don Brauer, Paul Davis, David Hinch.

# STUDENT COUNCIL

## OFFICERS

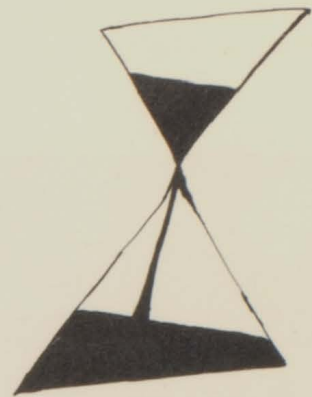
President . . . . . Rod Boeker  
 Vice-President . . . . . Don Brauer  
 Secretary and Treasurer . . . . . Connie Grosboll  
 Advisor . . . . . Miss Terry



TOP ROW: Phil Belton, Wayne Jones, Allen Thomas, Larry Eddings, Mike Carter. SECOND ROW: Jim Davis, Jim Moss, Miss Terry, David Barbee, Mike Gronewold. SEATED: Cathy Grosboll, Rod Boeker, Don Brauer, Linda Hinrichs. (Connie Grosboll not present for picture).



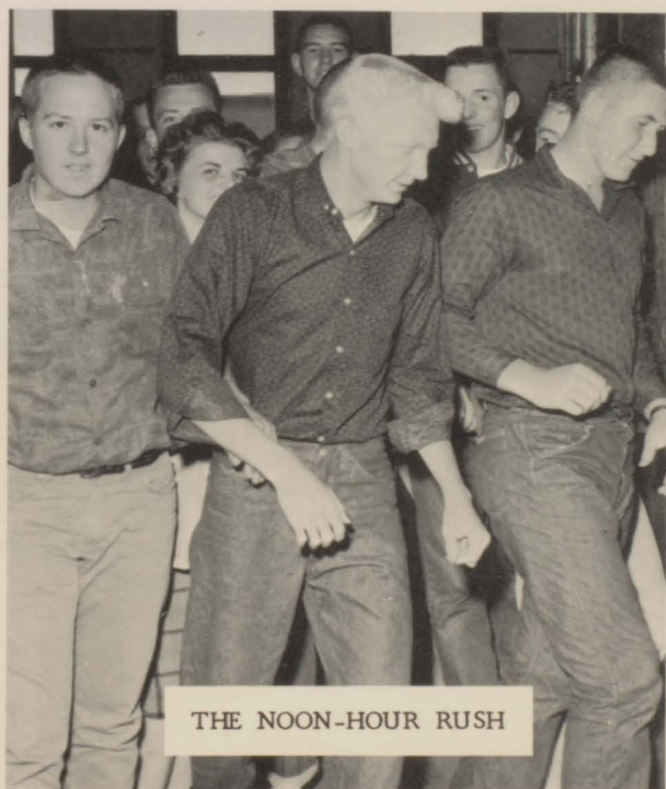
STUDENT COUNCIL PRESENTING TROPHY CASE



BETTY CROCKER  
AWARD WINNER



HOMECOMING QUEEN CANDIDATES



THE NOON-HOUR RUSH



JUNIOR PLAY USHERETTES



TOP ROW: Barbara Tibbs, Lou Bumgardner, Lorna Arnold, Cheryl Bradley, Christine Martin, Patty Fricke, Jane Brauer, Pam Melcher, Sue MacLeod, Patty Weatherby. THIRD ROW: Joyce Humphrey, Jackie Rebbe, Phyllis Carter, Sandy Blair, Sally Nance, Nancy Conn, Nancy Watkins, Sherry Whitehead, Sue Grosboll. SECOND ROW: Beverly Winkelmann, Barbara Janssen, Mary Connor, Cathie Grosboll, Mrs. Knous, Linda Hinrichs, Cathy Pike, Nora McCool, Roszeta Lynn. FIRST ROW: Lois Hinrichs, Karen McCool, Jean Grossbaier, Cyndy Knuppel, Linda Lucht, Mary Pat Guinan, Janet White, Susan Barbee, Wanda Miller.





TOP ROW: Jo Ann Schastsiek, Bonnie Hohimer, Susan Masten, Marcia Fricke, Marlyn Sargeant, Sara Claussen, Mary Jane Fricke, Sharon LeMar, Caryl Martin. THIRD ROW: Jane Shaw, Connie Behrends, Donna Cherry, Sally Shaw, Sharon Lounsberry, Karen Stiltz, Linda Kording, Bonnie Barbee, Brenda Snyder. SECOND ROW: Carolyn Janssen, Lynne Hendricker, Phyllis Cline, Ardith Whalen, Esther Beaty, Barbara Apken, Brenda Peters, Diana Hayden, Karen Loeffler. FIRST ROW: Susan Sathoff, Sue Shockey, Sara Dawson, Susan Bricker, Libby Cobb, Carolyn Hurley, Elsie Todd, Margaret Clark, Janice Brass, Connie Anderson.



FRESHMAN ENSEMBLE  
 Marcia Fricke, (Accomp.),  
 Jackie Rebbe, Pam Melcher,  
 Karen Loeffler, Cathy Pike,  
 Susan Bricker, Janice Brass,  
 Carolyn Janssen, Lois Hinrichs.

V  
O  
C  
A  
L



SOPHOMORE ENSEMBLE  
 Lynne Hendricker, Diana  
 Hayden, Cyndy Knuppel, Jane  
 Shaw, Cheryl Bradley, Sara  
 Claussen, Jane Fricke, Joyce  
 Humphrey, Sandy Blair,  
 Carolyn Hurley (Accomp.)

A  
C  
C  
O  
M  
P  
A  
N  
I  
S  
T  
S



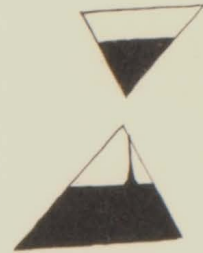
Cathie Grosboll  
 Patty Fricke  
 Marcia Fricke  
 Carolyn Hurley  
 Esther Beaty  
 Sara Dawson  
 Barbara Janssen



J  
U  
N  
I  
O  
R  
  
T  
R  
I  
O



Barbara Apken  
Barbara Tibbs  
Marlyn Sargeant  
Patty Fricke (Accomp.)



JUNIOR ENSEMBLE

Mary Connor, Pat Fricke, Marlyn Sargeant,  
Cathy Grosboll (Accomp.), Lorna Arnold,  
Phyllis Cline, Linda Kording, Esther Beaty,  
Barb Tibbs, Sharon Lounsberry, Linda Hinrichs.



SENIOR ENSEMBLE

Barb Janssen, Karen Stiltz, Chris Martin, Brenda  
Peters, Connie Behrends, Donna Cherry, Karen  
McCool, Bonnie Barbee, Nancy Watkins, Sara  
Dawson (Accomp.)



E  
N  
S  
E  
M  
B  
L  
E  
S



STANDING: Penny Rule, Mr. Bassana, Marlyn Sargeant. THIRD ROW: Mary Stout, Penny Brockman, Sally Lounsberry, Sandy Stroh, Wanda Sharp, Terry Dowell, Mike Eddings, Garth Whisnant, Barbara Jansen, Preston Morgan, David Rogers, Steve Stout, Dennis Pike. SECOND ROW: Karen McCool, Brenda Peters, Esther Beaty, Pam MacLeod, Janet Nottingham, Patricia Sears, Karen Loeffler, Katie Moulton, Ed Satorius, Jane Shaw. FIRST ROW: Sally Shaw, Barbara Apken, Lois Brauer, Bonnie Barbee, Lois Hinrichs, Patty Weatherby.



STANDING: Carolyn Chambers, Phyllis Cline, Marcia Fricke, Sandy Blair, Tom Knous. THIRD ROW: Bill Fielden, Jim Allen, Larry Magee, Paul Montgomery, John Wood, Wayne Winkelmann, Susan Sathoff, Sara Claussen, Bob Morgan, Sue Grosboll, Ardith Whalen, Connie Behrends. SECOND ROW: Barbara Tibbs, Roszeta Lynn, Carolyn Janssen, Diana Hayden, David Hinch, Mary Jane Fricke, Carolyn Hurley, Joyce Humphrey. FIRST ROW: Jane Brauer, Patty Fricke, Joyce Cline, Donna Cherry, Sue Shockey, Cathie Grosboll.

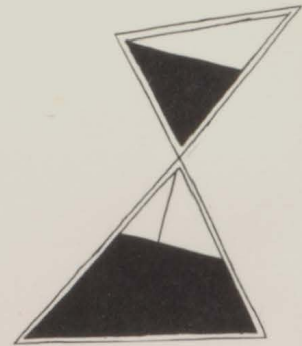
"Never idle a moment, but  
thrifty and thoughtful of others."  
Longfellow



OFFICE RECEPTIONISTS



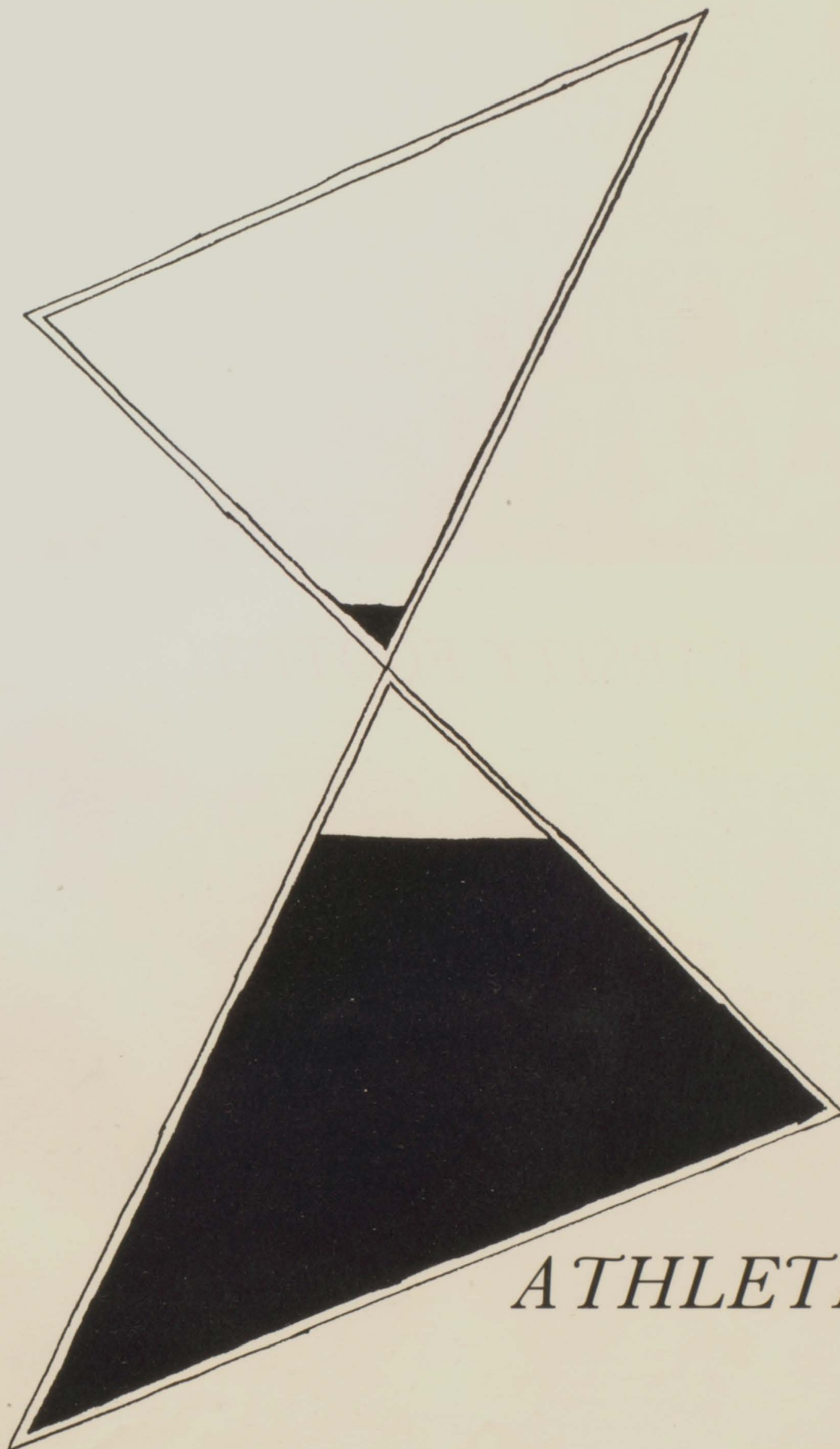
BUS DRIVERS



THE COOKS



JANITORS



*ATHLETICS*



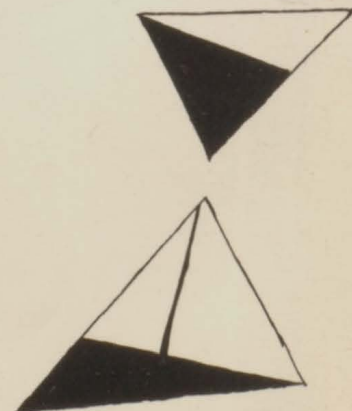
## *VARSITY FOOTBALL*

10	Jim Satorius	End
80	Larry Magee	Tackle
62	Don Erickson	End
15	Terry Cutright	Tackle
50	John Tedder	End
14	Don Brauer	Quarterback
60	Larry Vogt	Tackle

Coach--Richard Clark

71	John McCombs	Fullback
74	Steve Finney	Guard
63	Terry Wallace	Halfback
11	Ronnie Dowell	End
61	Bill Cook	Tackle
65	Greg McNeil	Back
51	John Grosboll	Center
70	Jim Brown	Guard

72	Marty Lynn	Fullback
64	Gary Hagar	Guard
52	Wayne Jones	Back
54	Paul Davis	Center
12	Larry Smith	Back
53	Albert Hughes	Tackle

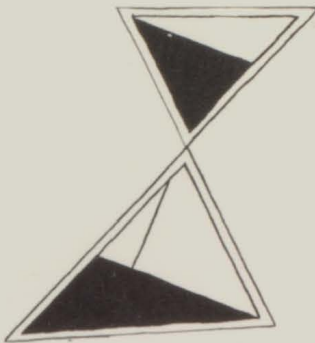




# JUNIOR VARSITY

BACK ROW: Greg Hinrichs  
Bruce Worthington  
Ed Satorius  
David Rogers  
Gary Buracker  
George Davis  
Tim Baker  
Cecil Collins

Coach--Jerry Frey



FRONT ROW: Tom Raikes  
David Preston  
Jim Allen  
Phil Belton  
Paul Montgomery





*Time to*



*Begin Practice*



D. Brauer



R. Boeker



L. Smith

L. Nottingham

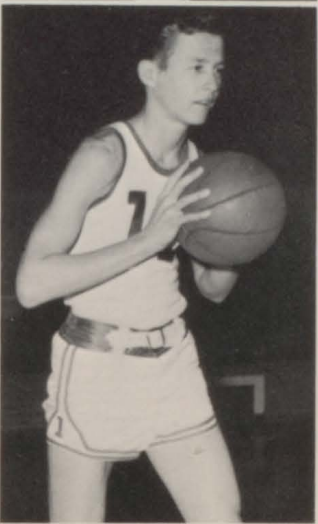


*P  
O  
R  
T  
A  
'  
S*

R. Dowell

M. Lynn

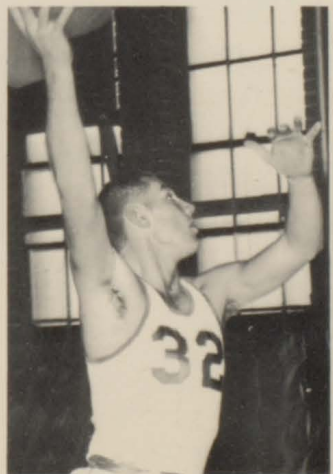
*B  
I  
G  
  
T  
E  
N*



D. Thomas

J. Tedder

R. Miller



F. Grogan



## *VARSITY BASKETBALL*

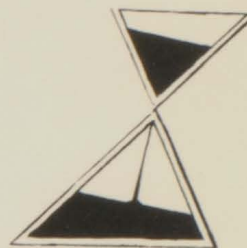
32	John Tedder . . . . .	Forward
20	Don Brauer . . . . .	Forward
45	Richard Miller . . . . .	Center
40	Dave Thomas . . . . .	Center
22	Marty Lynn . . . . .	Forward

Coach--Richard Clark

35	Larry Nottingham . . . . .	Guard
12	Ronnie Dowell . . . . .	Guard
34	Floyd Grogan . . . . .	Guard
24	Rod Boeker . . . . .	Guard
14	Larry Smith . . . . .	Guard



41 Jim Davis . . . Forward  
 11 Jon Small . . . Center  
 23 Dick Stiltz . . . Forward  
 25 David Gum . . . Guard  
 31 Gene Tressler . . Forward  
 24 Larry Bradley . . Guard  
 21 Tim Hurie . . . Guard



Coach . . . Jerry Frey

13 Allen Thomas . . Forward  
 50 Vernie Ames . . Forward  
 15 Don Erickson . . Center  
 12 Wayne Jones . . Forward  
 33 Don Kording . . Forward  
 20 George Davis . . Guard

## JUNIOR VARSITY





VARISTY CHEERLEADERS

Lois Brauer--Sharon LeMar--Judy Gronewold--Ardith Whalen--Connie Grosboll.

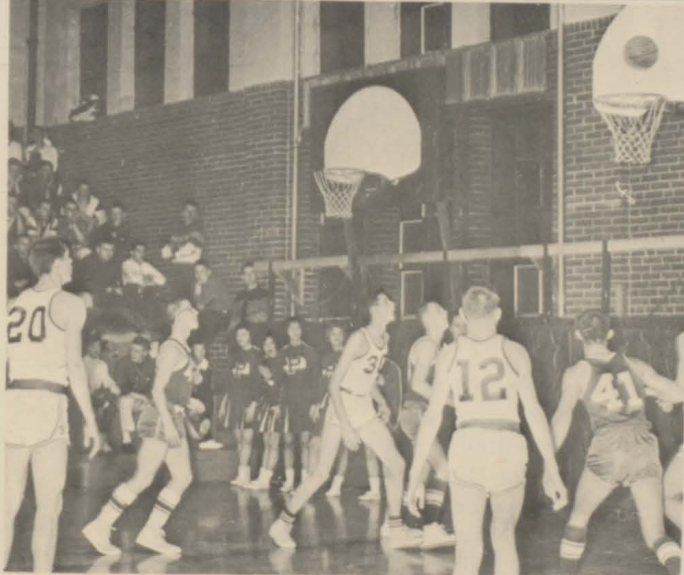
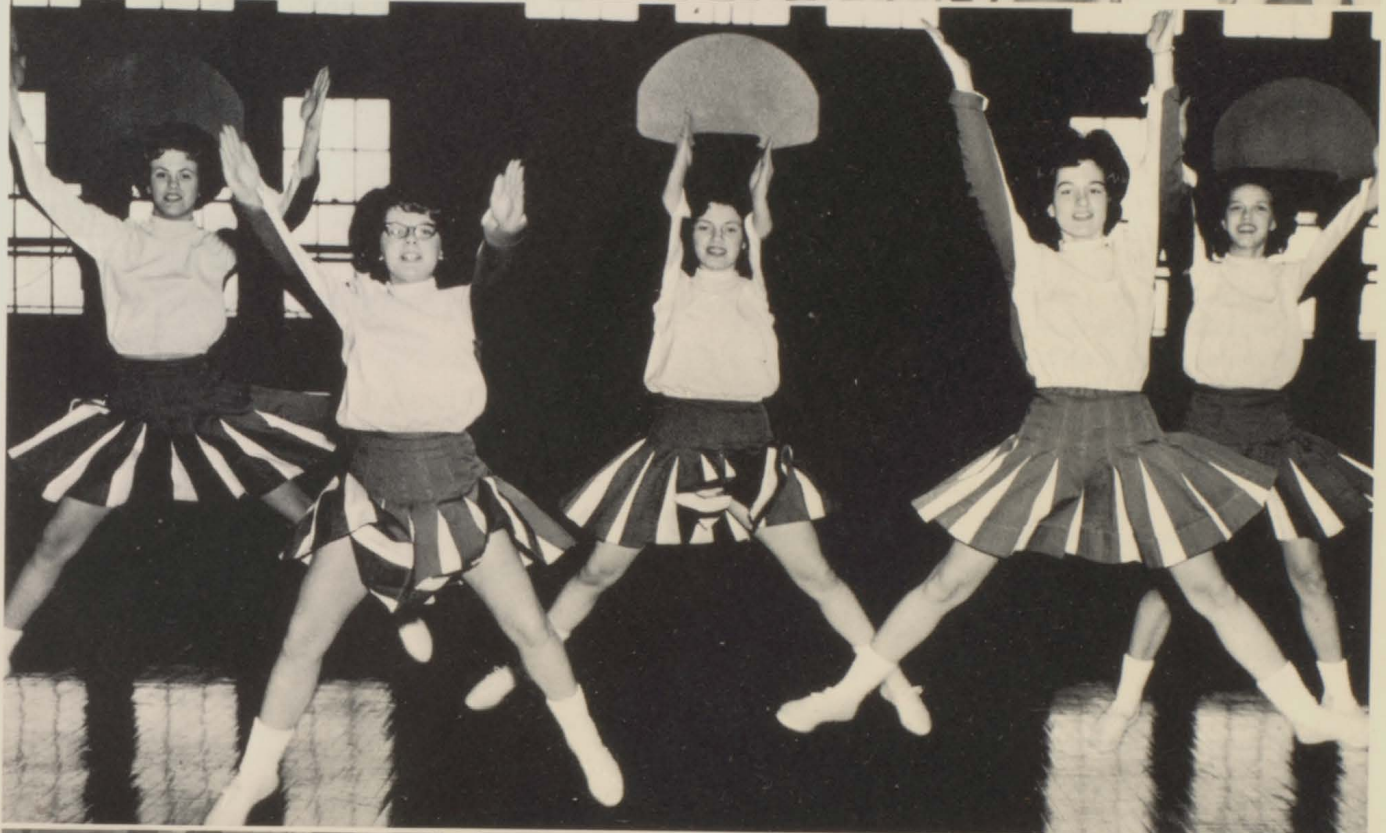


*Blue! White! Yea Team, Fight!*



JUNIOR VARSITY CHEERLEADERS

Pat Sears--Joyce Humphrey--Jane Brauer--Connie Shipley--Wanda Miller.



# Calendar 1963-64

## August

- 28 Opening Day
- 30 Teacher's Workshop (no school)

## September

- 2 Labor Day (no school)
- 3 School Resumes
- 4 G.A.A. Organization
- 5 Board and Faculty Pot Luck Supper
- 13 Election of Class Officers
- 16 Student Council Organization  
Assembly, Gene Straub
- 17 F.F.A. Organization  
Library Staff Organization  
F.H.A. Picnic
- 19 Wig 'N Paint Organization
- 20 Individual Pictures
- 24 F.T.A. Organization
- 26 National Honor Society Organization

## October

- 1- 2 Senior Pictures
- 3 Assembly, "The Orem's"  
Homecoming Bonfire and Snake  
Dance
- 4 I.S.S. Organization  
Homecoming Game and Dance
- 11 End of First Six Weeks
- 15 P.S.A.T.
- 18 Ill. Ed. Assoc. meeting in  
Springfield (no school)
- 21 Mason-Menard Teachers' In-  
stitute (no school)
- 22 Assembly, "The Castles"  
Report Cards  
A.A.U.W. College Night
- 28-29 State-Wide Tests

## November

- 4 T.B. Tests
- 5 Group Pictures for Sphinx
- 11 Veterans' Day (no school)
- 12 Football Pot Luck Supper
- 13 Assembly, Columbus Boy Choir
- 18 Air Force Test
- 21-22 Junior Play--THE FAMILY NO-  
BODY WANTED
- 26 Assembly, Otto Schmidt
- 28-29 Thanksgiving Vacation

## December

- 2- 6 Williamsville Tourney
- 2 Betty Crocker Test
- 5 Assembly, Blue Fairy Puppets
- 6 Report Cards
- 17 Chorus Christmas Concert

- 20 Christmas Homecoming Tea  
and Dance

23-Jan. 1. Christmas Vacation

## January

- 2 School Resumes
- 6- 7 CMW Conference Tourney
- 13-18 Semester Exam Week
- 20 Sphinx Group Pictures
- 20-25 PMSC Tourney
- 27 Assembly, Rev. Wm. Skadden
- 29 Report Cards

## February

- 7 Assembly, Fred Lowery
- 12 Lincoln's Birthday  
(no school)
- 15 District Speech Contest  
Key Club Spaghetti Supper
- 28 End of Fourth Six Weeks  
County Institute (no school)
- 29 Individual Sectional Speech  
Contest  
(Cyndy Knuppel, Bonnie Barbee)

## March

- 3- 6 Havana Regional Tourney
- 3 National Merit Test
- 7 Dramatic Sectional Speech  
Contest  
"Balcony Scene"
- 12 Assembly, Dorothy Stitzel
- 14 Solo and Ensemble Contest
- 17 Assembly Byron Koontz
- 25 I.T.E.D.
- 27-30 Easter Vacation

## April

- 2- 3 Senior Play--THE OTHER YOU
- 4 F.H.A. Section Rally
- 10 End of Fifth Six Weeks
- 15 I.T.E.D.
- 18 Band and Chorus Contest
- 21 Assembly, Naomi Gibbs
- 23 National Honor Society Banquet

## May

- 1 Athletic Banquet
- 5 Band Concert
- 12 Assembly, Jean Berkshire
- 15 Junior-Senior Prom
- 19 Chorus Concert
- 24 Baccalaureate
- 26 Class Night
- 28 Commencement
- 29 Last Day of School



# 1964 SPHINX ADS

## *Apken Lumber Company*

Quality and Service

## *First National Bank of Petersburg*

Member of the Federal Reserve System  
Member of Federal Deposit Insurance Corp.

## *Robbins*

Dry Goods, Clothing and Shoes

## *Dr. A. E. Davis*

Dentist  
Petersburg, Illinois

## *Hudspeth Implements & Feeds*

Massey-Ferguson  
Implements & Tractors  
Home Appliances--T.V.  
Full O Pep & Critic Feeds

## *Kirby's Royal Blue Store*

Petersburg, Illinois

## *Lutes Barber Shop*

Dave & Paul Lutes

## *Gambles*

General Electric  
Tappan--Coronado  
Appliances and Service

## *H. P. Satorius*

Funeral Director & Furniture Dealer

## *Finney Pharmacy*

Art Finney, Registered Pharmacist  
Petersburg, Illinois  
Phone 632-2255

## *Bill's FS Service*

Bill Sherren, Dealer  
Petersburg, Illinois

## *Art's Conoco Gas Station*

Sixth & Sangamon  
Petersburg, Illinois

## *Menard County Farm Bureau*

Serviced Agriculture

## *West Food Stores*

Petersburg, Illinois

## *Menard Farm Bureau Seed Co.*

Distributors of Funk's Seed Corn  
Distributors of Producer's Seeds  
For the Best in Seeds, See Us

## *The Country Companies*

C. W. Zuhlke  
Insurance

## *McGary Transfer*

Phone 632-2685 or 632-7526  
We Also Do Furniture Moving

## *Compliments of Snyder Lumber Co.*

Petersburg, Illinois  
Post Office Box 356  
632-7112

## *Tallula Farmers Elevator Company*

Seeds and Nutrena  
Phone 634-4313

## *Menard Service Company*

A Farmer Owned Service  
Petroleum Products--Steel Products  
Plant Food, A Feed for every need

## *Clarence W. Tozer*

Insurance of all kinds

## *Balster Truck Service*

John H. Balster  
Petersburg, Illinois  
Home 632-2184--Shop 632-2692  
Dump Trucks--Limestone Trucks

## *Menard County Abstract Company*

Petersburg, Illinois

## *Paul C. Armstrong*

Your A & P Dealer

## *William Kasten*

Freight Service  
Petersburg, Illinois  
Phone 632-2791

## *Maple Leaf Farms*

Petersburg, Illinois

## *Tallula Lumber Company*

Lumber and Building Materials  
"Do It Yourself Supplies"  
Phone 634-4322

## *Beltons' Barber Shop*

121 South Seventh

## *Whalen Rexall Drug Store*

Congratulations to the Class of '64

## *Peters' Shoe Store*

Shoes for the Entire Family  
Petersburg, Illinois

## *Salem Plumbing & Heating Company*

Petersburg, Illinois

## *Allen Lumber Company*

Quality Materials at Reasonable Prices

## *The Snack Shack*

Sarah Guinan

## *The Petersburg Observer*

Printing and Publishing Since 1874

## *Redwood Cafe*

Mr. & Mrs. James Gillmore  
Petersburg, Illinois

## *Petersburg Coca-Cola Bottling Co.*

Petersburg, Illinois

*Dr. L. C. Burt —Veterinarian*

320 North Sixth  
Petersburg, Illinois

*Thompson-Harms & Hurley Funeral Home*

Petersburg, Illinois

*Roseview Greenhouses*

Congratulations and Best Wishes

*Glenn B. Thomson*

Hardware  
Petersburg, Illinois

*Carpenter's Store*

5¢ to \$1.00  
Petersburg, Illinois

*Ideal Industries, Inc.*

Petersburg, Illinois  
Congratulations and Best Wishes

*Western Auto*

Petersburg, Illinois  
Phone 632-2542

*Derry Hardware*

Phone 632-7921  
Petersburg, Illinois

*Joe Chester*

Recreation Hall  
Petersburg, Illinois

*Dr. T. F. Carter*

204 South Sixth  
Petersburg, Illinois

*Biggs Planing Mill*

Glass--Paint--Aluminum Windows &  
Doors  
Petersburg, Illinois

*Al Ragen*

Barbering by Appointment  
595 West Lincoln Avenue  
Phone 632-7138

*H. F. Bennett, D.V.M.*

106 East Washington  
Petersburg, Illinois

*Churchill's Television*

Sales & Service  
RCA

*Dr. H. K. Moulton*

Petersburg, Illinois

*Buck's T.V.*

Sales & Service  
Phone 632-2441

*Stevens Implement Company*

John Deere & McCulloch  
Sales & Service  
Petersburg, Illinois  
Phone 632-2642

*Lucille Amberger*

Beauty Shop

*Severns' Insurance Agency*

Oakford, Illinois  
Phone 635-5632

*Stroh Oil Company*

Oakford, Illinois  
Phone 635-5611

*Stroh & Anderson Material Company*

Ready-Mix Concrete  
Petersburg, Illinois

*Lloyd's Jewelry Store*

West Side Square  
Petersburg, Illinois

*Bergen & Montgomery*

Insurance Agency  
Thomas Bergen  
Raymond Montgomery  
Petersburg, Illinois

*Ken's News Stand*

Newspapers and Magazines  
Coffee and Doughnuts  
Phone 632-2621

*Wilde Motor Sales Inc.*

Ford-Mercury-Falcon  
Sales & Service  
Petersburg, Illinois

*Petersburg Dairy Queen*

John and Pauline Babington

*W. Ernest Weatherby*

Dealer in Sinclair Products

*Clyde Knous Motor Company*

Phone 632-2422  
Petersburg, Illinois

*Dr. Hollis S. Powers, D.D.S.*

Southwest Corner Square  
Phone 632-2241

*Menichetti's Market*

Groceries and Meats  
Phone 632-2125

*John Knuppel, John Grosboll, and  
Kenneth R. Boyle*

Attorneys at Law

*George's Shell Service*

Everything you Expect to find in a  
Service Station

*Ketchum's Standard Service*

Atlas Tires and Batteries  
S&H Green Stamps with every purchase

*Jefferson Lewis*

Petersburg, Illinois

*Oakford Laundramat*

Oakford, Illinois

*Boeker's Store*

Oakford, Illinois

*Petersburg Seed Company*

Petersburg, Illinois  
Phone 632-2423

*Salem Country Store*

Antiques, novelties, gifts  
6 blocks south of Petersburg, Route 97

*The National Bank of Petersburg*

Member of Federal Reserve System  
Member Federal Deposit Insurance  
Corp.

*J. C. Luther*

Petersburg, Illinois

*Menard Bowl*

Tel-e-score  
A.M.F. Automatic Pin Spotters  
Air-Conditioned  
Petersburg, Illinois

*Thomas W. Nichols*

Tallula, Illinois  
Phone 632-7261  
Liquid Fertilizer--herbicide--  
insecticide spraying

*O. K. Grain and Feed Company*

Oakford--Atterberry  
635-5623--632-7307

*Frank Prough, Jr.*

State Farm Insurance  
Petersburg, Illinois  
Phone 632-7405

*Watkins Cafe and Pine Room*

Friendly Service  
Petersburg, Illinois

*John W. Horn, Trucking*

Local & Long Distance  
Phone 632-2739

*Tallula West Food Store*

Phone 634-4171  
Tallula, Illinois

*Village Cafe*

"Where Good Friends Meet to Eat"  
Tallula, Illinois

*Louise's Beauty Shop*

Phone 634-4316  
Tallula, Illinois

*Tallula Market*

Ken and Marianne Geda  
Phone 634-4107  
Tallula, Illinois

*Mildred Mathew*

Insurance  
Phone 634-4474  
Tallula, Illinois



We, the editors and Sphinx staff, wish to express our  
thanks and appreciation to:

The American Yearbook Co. and Representative,  
John Straub

Blankenberg Photographers, Kankakee, Ill.  
PETERSBURG OBSERVER

Dr. H. K. Moulton

Mrs. Ruthelma Wankel and Mrs. Charlotte  
Satorius, yearbook advisors.

# AUTOGRAPHS



"And departing, we leave  
behind us  
Footprints on the sands of  
time."

Longfellow

